

SHOWVEN[®]
PASSION FOR INNOVATION

*Our Innovation
Sparks Up Your Show*

ABOUT US



Our innovation journey starts from 2015, with the invention of SPARKULAR®, world's first spark machine that perfectly replaces traditional fireworks gerb. Since then on, our innovation have been continuously introduced one after another, we invented the SPARKUALR® Cyclone, 10m sparks effects; SPARKULAR® JET which again a never seen special effects machine to replaces traditional fireworks jet. The first flame thrower with 360 degree rotatable nozzles CIRCLE FLAMER X-F3600; The first standalone flamer with effects upto 20m uFlamer Max. The first dedicated special effects console FXcommander® for professionals to control both DMX and PYRO simultaneously, which brings the control of special effects to a next level safety. In 2025, we become the world's first manufacturer launches the standalone liquid color flammers on the market. For better technology breakthrough and bring more innovated solutions to this industry, we established an R&D team with 40 talented engineers, invest 10% of our turnover in R&D every year. And we obtained 1 US patent, 2 EU patents, 1 AU patent and hundreds of patents in China.

In SHOWVEN®, we established a dedicated QUALITY department, introduced strict quality control process from product design, raw material supply to production, testing and package to ensure high quality product supply. For better SERVICE our customer and meet the growing market demand, we invested in the construction of a 34000m² industrial park in 2021, which is by far the world's largest facility dedicated in special effects industry.

In SHOWVEN®, we care about environment and pursue sustainable development; we care about the well-being of our staff; and we listening to our customer, collecting market demand and keeping improve our products. Together with our global partner we will sparks up your show in every corner of the world.

PATENTS FOR INVENTION



PART OF TRADEMARKS



COMPANY LEVEL CERTIFICATE



NATIONAL LEVEL AWARDS



\ TECHNOLOGICALLY ADVANCED "LITTLE GIANT" ENTERPRISE (MINISTRY OF INDUSTRY AND INFORMATION TECHNOLOGY)



\ NATIONAL KEY CULTURAL EXPORT ENTERPRISE (MINISTRY OF COMMERCE)



\ SPARKULAR AWARDED AS LDI BEST DEBUT PRODUCT



\ SHOWVEN® LASER IS A' DESIGN AWARD WINNER IN 2023 - 2024 PRODUCT ENGINEERING AND TECHNICAL DESIGN AWARD CATEGORY.

PRODUCT RANGE



\ SPARKULAR®.....05-20



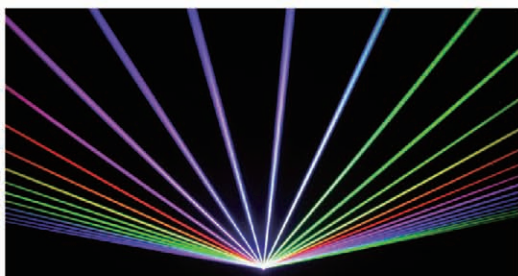
\ FLAME.....21-42



\ SMOKE / BUBBLE / DROP43-57



\ CONFETTI.....58-64



\ LASERS.....65-68



\ CONSOLE & PYRO.....69-76

SPARKULAR®



SPARKULAR®

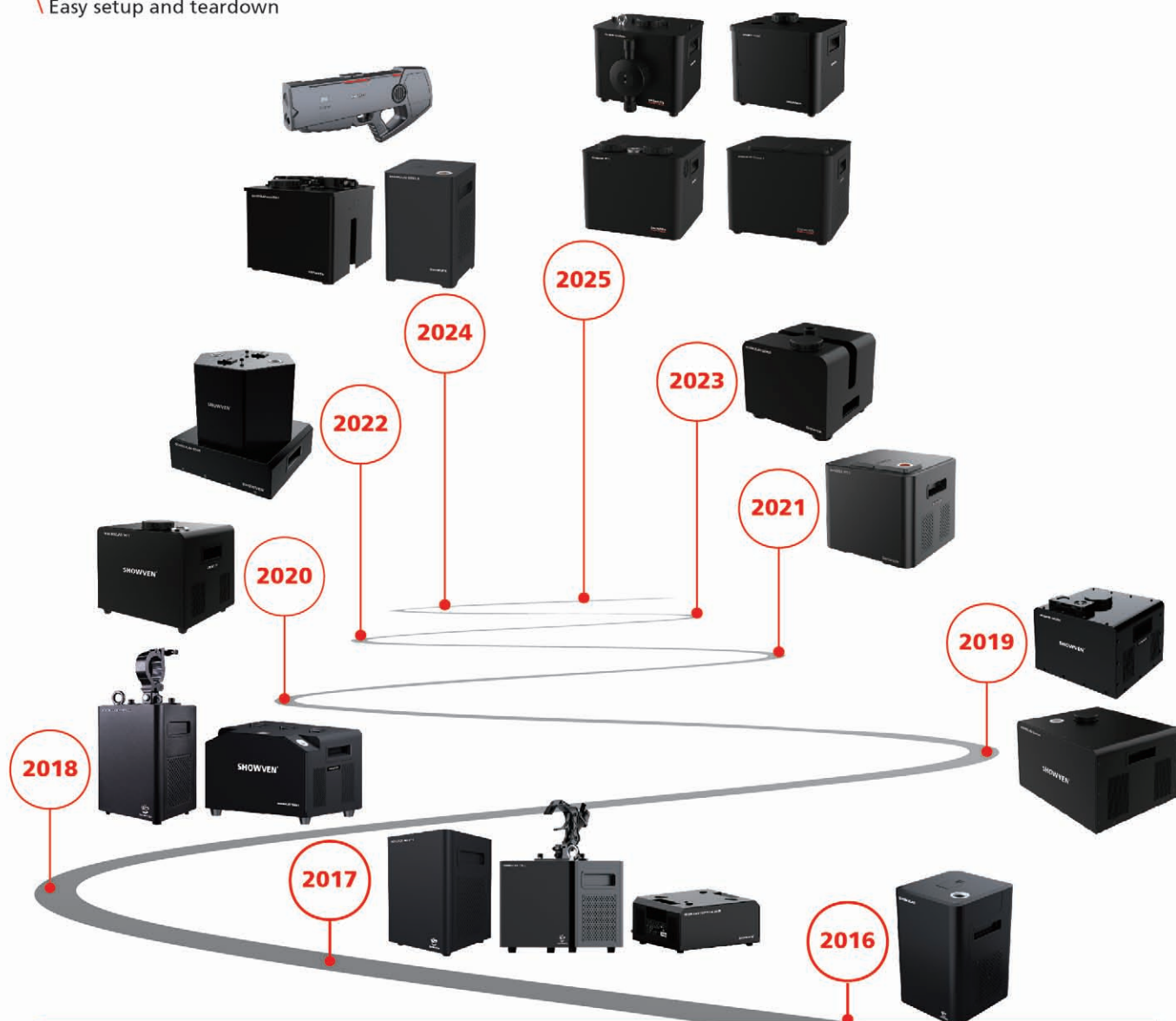
SPARKULAR® is not only a global trade mark of SHOWVEN®, but also a brand new effect invented by SHOWVEN® in 2015, it generate sparks effect with only an electronic device and metal powder. We obtained 1 US patent, 2 EU patents and 1 Australia patent and dozens of patents in China on this non-pyro technology. And wined the best debut product on 2016 LDI show in Las Vegas.

The SPARKULAR® is a perfect substitute of traditional fireworks gerb. When firing there is no flame tail, no gunpowder is used and it is fully controllable, brings the spark effects to a new safety standard. Besides, there is no smoke and no pyro smell generated makes it an ideal choice for indoor events.

Based on the patented SPARKULAR® technology platform, we have continuously developed and innovated in the past few years, listened to customer's needs, and launched a broad series of SPARKULAR® products.

COMMON FEATURES

- \ Original innovation introduced by SHOWVEN®
- \ Patented non-pyro technology
- \ Safe, non-pyro, no gunpowder and multi built-in safety sensors
- \ Tilt protection, safer for use
- \ DMX controllable, can be started and stopped at any time
- \ Environmental friendly, no smoke and pyro smell
- \ Adjustable sparks height through DMX or powder size
- \ Long effects time after fill up
- \ Easy setup and teardown



SPARKULAR® mini



- \ Wireless control, easy operation
- \ Light weighted and compact design, easy to carry



- \ White version optional
- \ Work with SPARKULAR® PORTABLE PACK to achieve real wireless

SPARKULAR®



- \ The world's first spark machine
- \ Winner of Best Debut Product



- \ Adjustable effect height from 1.5-5m
- \ Up to 10-20min effects time after fill up

SPARKULAR® MOBILE



- \ Truly wireless, with built-in battery
- \ Extra long standby time, heating on >3h, heating off >144h
- \ Remote heating ON/OFF switch by FXmote
- \ 30% lower core temperature, safer for use
- \ 2min fast initial heat up



SPARKULAR® II



- \ New generation SPARKULAR®
- \ Precise effect height adjustment from 2 to 6m
- \ All motor status real time monitoring



- \ Rainproof struture, can be used in rain
- \ 3.2' LCD color screen, both 3 and 5-pin XLR

SPECIFICATIONS:

SPARKULAR® SERIES		SPARKULAR® mini	SPARKULAR®	SPARKULAR® II	SPARKULAR® MOBILE
MODEL		BT06 / BT07	BT01 / BT02	BT11 / BT12	BT16
DIMENSION (mm)		168×180×228	200×218×305	286×280×258	168×180×257mm
NET WEIGHT (kg)		4.5	8.5	9	6
VOLTAGE		AC 220V/110V, 50/60Hz			AC 100-240V, 50/60Hz
POWER		380W	500W	500W	100W
HOUSING MATERIAL		FR ABS		FR-ABS+Aluminium	
INTERNAL BRACKET MATERIAL		Stainless steel			
COLOR		Black / White	Black	Black	Black / White
EFFECT DIRECTION		Vertical Up			
HOPPER CAPACITY		100g	200g	300g	100g
MAX. EFFECT HEIGHT	SMALL	1.5-2m	1.5-2.5m	1.5-3m	1.5-2m
	MEDIUM	2-2.5m	1.5-3.5m	2-4.5m	2-3m
	LARGE	2-3.5m	2-5m	3-6m	3-4m
HEIGHT ADJUSTABLE BY DMX		NO	YES	YES	NO
HC8200 CONSUMPTION RATE		15g/min	20g/min	20g/min	15g/min
SCREEN		LCD	LCD	3.2" Color LCD screen	LCD
POWER CONNECTORS		POWER IN/OUT	POWER IN/OUT	powerCON TRUE1 IN/OUT	powerCON TRUE1 IN/OUT
XLR CONNECTORS		3-pin	3-pin	3-pin and 5-pin	3-pin
USAGE IN RAIN		NO	NO	YES	NO
CONTROL		DMX, Wireless	DMX, Wireless optional	DMX, Wireless	DMX, Wireless
DMX CHANNELS		2	2	2	2
WORK TEMP.		-20°C~50°C			-10°C~50°C
BUILT-IN BATTERY		NO			YES
STANDBY TIME		-			HEATING OFF > 144h HEATING ON > 3h

SPARKULAR® WP



- \ IPX4 rated weatherproof enclosure, designed for outdoor installations
- \ 1200g extra large hopper, support 45min effects time
- \ Adjustable effects upto 6m, fuller effect
- \ New concept design easier for maintenance

SPARKULAR® Cyclone



- \ 10m spark effects machine
- \ Powerful output with dense sparks
- \ Reinforced stainless steel structure
- \ Rainproof encloser, can be used in rain

SPARKULAR® Cyclone II



- \ Compact, 35% smaller than SPARKULAR® Cyclone
- \ Lighter weighted, only 16kg
- \ Lower noisy
- \ Rainproof structure, IPX3 certified, can be used in rain
- \ 6-10m adjustable effect

SPECIFICATIONS:

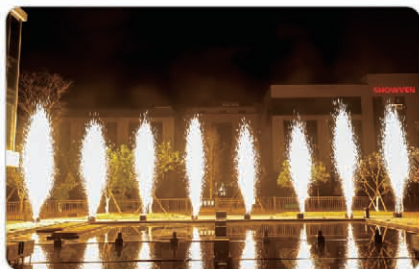
SPARKULAR® SERIES		SPARKULAR® WP	SPARKULAR® Cyclone	SPARKULAR® Cyclone II
MODEL		BT73 / BT74	BT61 / BT62	BT63 / BT64
DIMENSION (mm)		317×287×295	457×370×280	348×316×290
NET WEIGHT (kg)		14	27	16
VOLTAGE		AC 220V/110V, 50/60Hz		
POWER		700W	1700W	1500W
HOUSING MATERIAL		304 stainless steel		
INTERNAL BRACKET MATERIAL		304 stainless steel		
COLOR		Black		
EFFECT DIRECTION		Vertical Up		
HOPPER CAPACITY		1200g	500g	450g
EFFECT HEIGHT	LARGE	5.5-6m	6-7m	Not Applicable
	LARGE I	5.5-6m	7-8m	Not Applicable
	LARGE II	Not Applicable	8-9m	Not Applicable
	LARGE III	Not Applicable	9-10m	6-10m
HC8200 CONSUMPTION RATE		25g/min	75g/min (LARGE III)	65g/min
SCREEN		3.2" Color LCD screen	LCD	3.2" Color LCD screen
ARM LIGHT		YES	NO	YES
HEIGHT ADJUSTABLE BY DMX		YES		
POWER CONNECTORS		Neutrik®powerCON TRUE1 IN/OUT		
XLR CONNECTORS		IP65 rated 3-pin and 5-pin XLR IN/OUT		
USAGE IN RAIN		IPX4	usage in rain	IPX3 certified
CONTROL		DMX		DMX, Wireless
DMX CHANNELS		2		
WORK TEMP.		-20°C~50°C		

SPARKULAR® JET



- \ Flashing SPARKULAR® effect originally invented by SHOWVEN®
- \ Effect similar to 1s fireworks mines
- \ Effect height adjustable from 5m to 10m
- \ Patented auto air compression technology, no external pressure tank needed
- \ 30° and 45° output tubes optional, achieve various firing angle

SPARKULAR® JET II



- \ Firing delay as short as half second
 - \ Upto three continuous shots
 - \ Fuller and more consistent sparks effect
 - \ Rainproof structure, can be used in rain
 - \ Adjustable effect up to 10m
 - \ Both 3-pin and 5-pin DMX, 9-60V pyro control
-

SPECIFICATIONS:

SPARKULAR® SERIES		SPARKULAR® JET	SPARKULAR® JET II
MODEL		BT91 / BT92	BT93 / BT94
DIMENSION (mm)		320×280×300	348×348×290
NET WEIGHT (kg)		16.5	25
VOLTAGE		AC 220V/110V, 50/60Hz	
POWER		350W	800W
HOUSING MATERIAL		304 stainless steel	Aluminum
INTERNAL BRACKET MATERIAL		304 stainless steel	
COLOR		Black	
EFFECT DIRECTION		Vertical Up, 30° and 45° angled nozzles optional	
HOPPER CAPACITY		450g	450g+450g
EFFECT HEIGHT	SMALL	4-5m	6-8m
	MEDIUM	6-8m	6-8m
	LARGE	8-10m	9-10m
HEIGHT ADJUSTABLE BY DMX		NO	NO
HC8200 CONSUMPTION RATE		6g/shot (SMALL) 15g/shot (MEDIUM / LARGE)	12-15g/shot (SMALL) 20-25g/shot (MEDIUM / LARGE)
SCREEN		LCD	3.2" Color LCD screen
ARM LIGHT		NO	YES
POWER CONNECTORS		Neutrik®powerCON TRUE1 IN/OUT	
XLR CONNECTORS		IP65 rated 3-pin and 5-pin XLR IN/OUT	
USAGE IN RAIN		YES	IPX3 certified
CONTROL		DMX	DMX, 9-60V pyro signal
DMX CHANNELS		2	
WORK TEMP.		-20°C~50°C	

SPARKULAR® TRIPLE



- \ 3-directions SPARKULAR® machine
- \ Triple heads, multi effects
- \ Separate control of each nozzle



SPARKULAR® SPIN



- \ Bidirectional rotatable
- \ Adjustable rotation speed
- \ DMX controllable, 2/4 channels switchable



- \ Built-in wireless control, easy programming
- \ Two 20° angled nozzles, romantic sparks effects

SPARKULAR® WAVER



- \ 180 degree waving spark effect
- \ Firing angle can be waving or any fixed direction between -90 to 90 degree
- \ Fast and precise nozzle waving based on exclusive dual PID algorithm control system
- \ 72 preset firing sequences, easy operation and programming
- \ Motor status real time monitoring, safer to use and easier problem diagnosis
- \ 3.2" LCD color screen, user friendly



SPARKULAR® WHEEL



- \ Brand new effects, 360° rotating nozzles
- \ Adjustable rotation speed, direction and angles
- \ Firing mode can be rotating, waving or fixed direction
- \ Various combinations, various effects



- \ Multiple installation interface to meet diverse scenario requirements
- \ Rainproof structure, IPX3 certified, can be used in rain
- \ Auto dynamic control based on multi sensor's feedback, ensure safer use

MULTI ANGLE SPARKULAR® SPECIFICATIONS:

SPARKULAR® SERIES		SPARKULAR® TRIPLE	SPARKULAR® SPIN	SPARKULAR® WAVER	SPARKULAR® WHEEL
MODEL		BT51 / BT52	BT81 / BT82	BT84 / BT85	BT83
DIMENSION (mm)		400×290×270	330×305×349	300×290×273	318×307×285mm
NET WEIGHT (kg)		20	20	15.5	15
VOLTAGE		AC 220V/110V, 50/60Hz			AC 100-240V, 50/60Hz
WORK POWER		1500W	1000W	500W	500W
HOUSING MATERIAL		304 stainless steel			
INTERNAL BRACKET MATERIAL		304 stainless steel			
COLOR		Black	Black / White	Black	Black
EFFECT DIRECTION		one vertical nozzle+two 25° angled nozzles	two 20° angled nozzles, rotatable	-90 ~ 90° (180° waving angles)	360°
HOPPER CAPACITY		3*160g	2*200g	400g	550g
EFFECT HEIGHT	SMALL	No data available	1.5-2.5m	No data available	Up:2.8m
	MEDIUM	2-4m	2-4m	2.5-3.5m	Up:3.3m
	LARGE	2-5m	2-5m	3-4.5m	Up: 4m; Down: 7m; Rotate: 3m radius
HEIGHT ADJUSTABLE BY DMX		YES			
HC8200 CONSUMPTION RATE		3*17g/min	2*20g/min	20g/min	50g/min
SCREEN		LCD	LCD	3.2" Color LCD screen	
SCREEN		NO	NO	YES	
POWER CONNECTORS		Neutrik®powerCON TRUE1 IN/OUT			
XLR CONNECTORS		Neutrik®3-pin and 5-pin XLR IN/OUT		IP65 rated 3-pin and 5-pin XLR IN/OUT	
USAGE IN RAIN		NO	NO	NO	IPX3 certified
CONTROL		DMX	DMX, Wireless		
DMX CHANNELS		6	2 / 4	6	
WORK TEMP.		-20°C~50°C		-20°C~40°C	

SPARKULAR® FALL



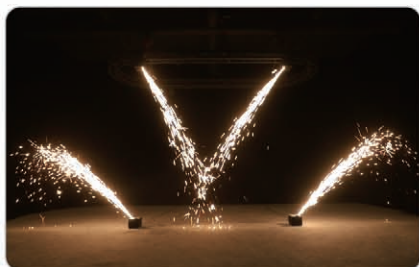
- \ DMX / Wireless remote control, can be started and stopped at any time
- \ Sparks "waterfall" effects for professional stage
- \ Fall length from 2-7m with different HC8200
- \ Up to 13-21min effects duration after fill up
- \ Easy setup and teardown with multi locations
- \ Switchable effects mode (Low Level/High Level)

SPARKULAR® miniFALL



- \ Sparks "waterfall" effects for indoor use
- \ Wide voltage design, can be used in 100-240V
- \ New spark generation platform, better stability
- \ New feeding structure minimize the stuck risks
- \ Low power consumption, energy saving
- \ Neutrik®powerCON connectors
- \ Light weighted, easy for hanging and carry

SPARKULAR® waverFALL



- \ 180 degree 3-7m adjustable waving spark fall effect
 - \ The firing angle can be waving or any fixed direction between -90 to 90 degrees
 - \ Fast and precise nozzle waving based on exclusive dual PID algorithm control system
 - \ 72 preset firing sequences, easy operation, and programming
 - \ 3.2" LCD color screen, user friendly
-

FALLING EFFECT SPARKULAR® SPECIFICATIONS:

SPARKULAR® SERIES		SPARKULAR® FALL	SPARKULAR® miniFALL	SPARKULAR® waverFALL
MODEL		BT04 / BT05	BT14	BT34/BT35
DIMENSION (mm)		196×208×192	150×160×240	309×305×285
NET WEIGHT (kg)		6	3.6	17
VOLTAGE		AC 220V/110V, 50/60Hz	AC 100-240V, 50/60Hz	AC 220V/110V, 50/60Hz
WORK POWER		500W	260W	500W
HOUSING MATERIAL		FR ABS	FR ABS	304 stainless steel
INTERNAL BRACKET MATERIAL		304 stainless steel		
COLOR		Black		
EFFECT DIRECTION		Vertical Down	Vertical Down	-90° to 90°
HOPPER CAPACITY		280g	300g	400g
EFFECT HEIGHT	SMALL	No data available	No data available	No data available
	MEDIUM	2-3m	2-3m	No data available
	LARGE	3-4m	3-4m	3-4m
	LARGE I	4-5m	Not Applicable	4-5m
	LARGE II	5-7m	Not Applicable	5-7m
HEIGHT ADJUSTABLE BY DMX		YES	NO	YES
HC8200 CONSUMPTION RATE		20g/min	15g/min	25g/min
SCREEN		LCD	LCD	3.2" Color LCD screen
ARM LIGHT		NO	NO	YES
POWER CONNECTORS		POWER IN/OUT	Neutrik®powerCON IN/OUT	Neutrik®powerCON TRUE1 IN/OUT
XLR CONNECTORS		3-pin XLR IN/OUT	NEUTRIK®3-pin XLR IN/OUT	IP65 rated 3-pin and 5-pin XLR IN/OUT
USAGE IN RAIN		NO	NO	YES
CONTROL		DMX, Wireless		
DMX CHANNELS		2	2	6
WORK TEMP.		-20°C~50°C		

SPARKULAR® BLASTER



FEATURES

- \ Brand-new handheld SPARKULAR® machine
- \ Battery powered
- \ Light-weighted and exquisite design
- \ 100s fast heating
- \ 90mins standby
- \ Low noise, only 60dB when working
- \ Safety arm button, dual safety
- \ Support external battery pack to extend standby time

SPECIFICATIONS

- \ Dimension: 585×270×95mm
- \ Weight: 3.8kg
- \ Charging Voltage: AC 100-240V, 50/60Hz
- \ Charging Power: 180W
- \ Charging Time: Appr.40min
- \ Housing Material: Reinforced nylon
- \ HC8200 Consumption Rate: 17g/min
- \ Initial Heat-up: 100s
- \ Suggested Firing Direction: 0-60°
- \ Hopper Capacity: 200g
- \ Standby Time: 90min
- \ Effect Output: 2-4m adjustable (MEDIUM), 3-5m adjustable (LARGE)

BLASTER OPTIONAL PARTS



\ External Battery Pack



\ Blaster Stand

HC8200



FEATURES

- \ No smoke, no pyro smell
- \ Granulated alloy, non-hazmat storage
- \ DGM tested, can be shipped by air/sea
- \ RoHS certified, environmental friendly
- \ Aluminum foil bag vacuum packaging, long shelf life

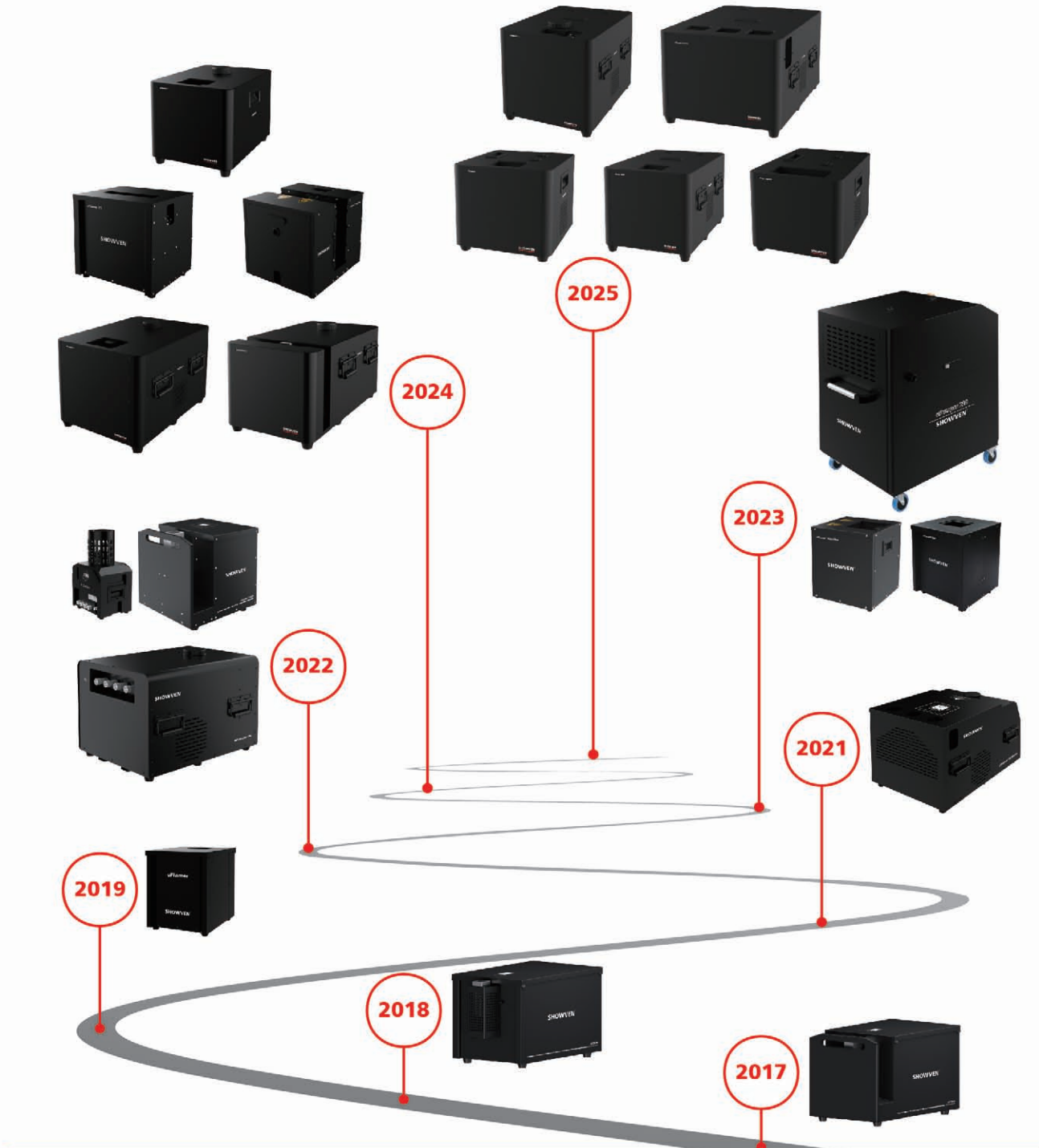
HC8200 type	Weight/bag	Package	Support model
HC8200 MEDIUM	50g/bag	12bags/box, 48boxes/carton	SPARKULAR mini, MOBILE
HC8200 LARGE			
HC8200 MEDIUM	200g/bag	12bags/box, 12boxes/carton	SPARKULAR, II, FALL, miniFALL, Cyclone,II, WP, SPIN, JET, II, WAVER, waverFALL, MOBILE, WHEEL
HC8200 LARGE			SPARKULAR FALL, Cyclone, II, WP, waverFALL
HC8200 LARGE I			SPARKULAR FALL, Cyclone, waverFALL
HC8200 LARGE II			SPARKULAR FALL, Cyclone, waverFALL
HC8200 LARGE III			SPARKULAR Cyclone

FLAMER



FLAMER

In special effects territory, nothing is more "hot" than flamer! SHOWVEN® set up a flamer R&D group since 2017. In 2018 we introduced the 360°rotatable flamer CIRCLE FLAMER X-F3600, which is an original innovation from SHOWVEN® and a never seen effects on market. In 2019 we launched the world's first unit of standalone liquid flamer uFlamer®. In SHOWVEN®, innovation never stops. 2021 we launched five heads flamer uFlamer® Volcano; 2022 we proudly released our hydraulic based flame system; 2023 the world's safest gas flamer uFlamer® Gasboom, 18m flame system uPumper P20H and uFlamer® X20. In 2024 we first introduce flame monitoring function into liquid flame system to ensure safer use. Meanwhile, we are also the first supplier of standalone flamer with effect up to 20m. 2025, we again leading the innovation of standalone liquid color flames. We are becoming the total solution supplier for flame effects, our customers can get whatever flame effects they wanted from us. From standalone flamers to hydraulic based flame system (hydraulic based), gas flamer to liquid flame solutions, single firing direction to multi directions to 360°waving angles, effects height from 2m to 20m.



cFlamer



- \ Color flamer with 10m output
- \ 5 color additives: red/blue/green/yellow/purple
- \ Water and corrosion-resistant pumping system
- \ Dual valve, dual igniters
- \ 5.3L fuel tank
- \ Support color fluid as well as isopar, isopropanol

cFlamer Quad



- \ Color changing flamer
- \ 10m color flame effect
- \ Quad igniters
- \ Water and corrosion-resistant pumping system
- \ Durable stainless steel + aluminum structure
- \ Can be used in rain
- \ Comprehensive safety configurations

cFlamer Boom



- \ Triple effects: flame ball, sparks and boom sound
- \ Support showven color fluid to generate color flame balls
- \ 10m flame ball effects and 12m sparks effects
- \ Built-in air compressor, plug and play system

SPECIFICATIONS:

COLOR FLAMER	cFlamer	cFlamer Quad	cFlamer Boom
DIMENSION (mm)	370×330×305	585×419×330	580×400×428
NET WEIGHT (kg)	20	51	54
VOLTAGE	AC 220V/110V, 50/60Hz		
POWER	400W	1500W	600W
HOUSING MATERIAL	Aluminum + 304 stainless steel		
FUEL TANK CAPACITY	5.3L	2.5L*4	5.3L
MAX. EFFECT HEIGHT	10m	10m	Sparks: 12m Flame Ball: 10m
FLUID CONSUMPTION	90ml/s	90ml/s	Fuel: 200ml/shot, HC8200: 25g/shot
MAX. FIRING DURATION	2s	2s	Not applicable
AIR TANK CAPACITY	Not applicable		8L
TANK RECHARGE TIME	Not applicable		3min
EFFECT DIRECTION	Vertical up		
PUMP	water and corrosion-resistant pump		
IGNITION	High voltage electron ignition		
IGNITOR	Dual	Quad	Dual
E-STOP CONNECTOR	YES		
ARM SAFETY INDICATOR	YES		
BUILT IN ACCUMULATOR	YES		
TILT SWITCH	YES		
FUEL	Color fluid (only support color fluid prepared from SHOWVEN additives), ISOPROPANOL, ISOPAR. HC8200 LARGE (cFlamer Boom)		
USAGE IN RAIN	YES		
SAFETY SWITCH	YES		
POWER CONNECTORS	Neutrik®powerCON TRUE1		
XLR CONNECTORS	IP65 rated 3-pin and 5-pin XLR IN/OUT		
CONTROL	DMX, 9-60V signal		
DMX CHANNELS	2 / 6	6	
WORK TEMP.	-20°C~50°C		

cFlamer mVolcano



- \ Compact color flamer with 5 angle output
- \ 10m color flame effect
- \ 5 color additives: red/blue/green/yellow/purple
- \ Water and corrosion-resistant pumping system
- \ 7.5L fuel tank
- \ Support color fluid as well as isopar, isopropanol

cFlamer Volcano



- \ Color flamer with 5 angle output
- \ Each output nozzle can be controlled independently
- \ 10m color flame effect
- \ 5 color additives: red/blue/green/yellow/purple
- \ Water and corrosion-resistant pumping system
- \ 5L*5 fuel tanks

color additives



\ FX-RED



\ FX-GREEN



\ FX-BLUE



\ FX-YELLOW



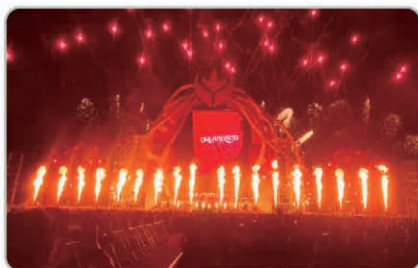
\ FX-PURPLE

- \ Five colors optional: red/green/blue/yellow/purple
- \ Concentrated liquid
- \ DGM certified as not restricted goods
- \ Bright color flames

SPECIFICATIONS:

COLOR FLAMER	cFlamer mVolcano	cFlamer Volcano
DIMENSION (mm)	460×330×305	690×525×375
NET WEIGHT (kg)	26	76
VOLTAGE	AC 220V/110V, 50/60Hz	
POWER	400W	2000W
HOUSING MATERIAL	Aluminum + 304 stainless steel	
FUEL TANK CAPACITY	7.5L	5L*5
MAX. EFFECT HEIGHT	10m	10m
FLUID CONSUMPTION	90ml/s	90ml/s*5
MAX. FIRING DURATION	2s	2s
EFFECT DIRECTION	5 angles	5 angles, can be together
PUMP	water and corrosion-resistant pump	
IGNITION	High voltage electron ignition	
IGNITOR	Dual	Dual*5
E-STOP CONNECTOR	YES	
ARM SAFETY INDICATOR	YES	
BUILT IN ACCUMULATOR	YES	
TILT SWITCH	YES	
FUEL	Color fluid (only support color fluid prepared from SHOWVEN additives), ISOPROPANOL, ISOPAR	
USAGE IN RAIN	YES	
SAFETY SWITCH	YES	
POWER CONNECTORS	Neutrik®powerCON TRUE1	
XLR CONNECTORS	IP65 rated 3-pin and 5-pin XLR IN/OUT	
CONTROL	DMX, 9-60V signal	
DMX CHANNELS	6	
WORK TEMP.	-20°C~50°C	

uFlamer®



- \ Fluid driven vertical flamer original designed by SHOWVEN®
- \ Built-in pump and 5L fuel tank, plug and play system
- \ Liquid level sensor
- \ Safety lock switch, safer for service
- \ Dual igniters
- \ Built-in battery design

uFlamer® II



- \ Aluminum housing structure, premium quality design
- \ Higher and bigger flame up to 12m
- \ The first liquid flamer system with flame monitoring function
- \ Cascadable power cut-off E-stop connector, ARM indicator, safety switch
- \ Dual pump, dual valve, dual igniter
- \ Built-in fuel tank and built-in 18650 battery design

uFlamer® Max / uFlamer® Max Plus



- \ The first standalone liquid flamer with flames up to 20m
 - \ Built-in pump and fuel tank, plug-and-play system
 - \ Triple high voltage igniters
 - \ Flame monitoring function
 - \ Multi-safety configurations: cascable power cut-off E-stop connector, ARM indicator light, safety switch, etc.
 - \ Up to 3s firing duration (PLUS version)
-

VERTICAL LIQUID FLAMER SPECIFICATIONS:

VERTICAL LIQUID FLAMER		uFlamer	uFlamer II	uFlamer Max	Max Plus
DIMENSION (mm)		330×260×320	460×330×330	570×425×380	690×475×415
NET WEIGHT (kg)		14	25	50	80
VOLTAGE		AC 100-240V,50-60Hz		AC 200-240V,50-60Hz	
POWER		300W	500W	2500W	
HOUSING MATERIAL		Stainless steel	Die-casting aluminum	Stainless steel	
FUEL TANK CAPACITY		5L	8L	17L	30L
MAX. EFFECT HEIGHT AND FUEL CONSUMPTION	NOZZLE EL	4-6m, 15ml/s		Not applicable	
	NOZZLE L	6-8m, 30ml/s		Not applicable	
	NOZZLE M	8-10m, 60ml/s	Not applicable	Not applicable	
	NOZZLE PM	Not applicable	8-10m, 60ml/s	Not applicable	
	NOZZLE H	Not applicable	10-12m, 95ml/s	Not applicable	
	NOZZLE XXH	Not applicable		20m 1L/s	
MAX. FIRING DURATION		8s	8s (PM) / 4s (H)	0.5s	3s
EFFECT DIRECTION		Vertical Up			
PUMP		Single	Dual	Single high power pump	
IGNITION		High voltage electron ignition			
IGNITOR		Dual		Triple	
BATTERY DRIVEN		YES	YES, 18650 battery	NO	
FUEL IN QUICK COUPLER		NO		YES	
AUTO REFUELING WITH uPumper mini		NO	YES		
FLAME MONITORING		NO	YES		
E-STOP CONNECTOR		NO	YES		
ARM SAFETY INDICATOR		NO	YES		
BUILT IN ACCUMULATOR		YES			
LIQUID LEVEL SENSOR		YES			
TILT SWITCH		YES			
CONSUMABLE		ISOPAR, ISOPROPANOL			
USAGE IN RAIN		YES			
SAFETY SWITCH		YES			
POWER CONNECTORS		Neutrik®powerCON TRUE1			
XLR CONNECTORS		IP65 rated 3-pin and 5-pin XLR IN/OUT			
CONTROL		DMX, 9-60V signal			
DMX CHANNELS		2 / 6			
WORK TEMP.		-20°C~50°C			

CIRCLE FLAMER COMMON FEATURES

- \ Waving head liquid driven flamer
 - \ Nozzle front design, safety lock switch, safer for operator
 - \ Dual valve, dual pump, dual igniter (except X-F3600)
 - \ DMX or 9-60V Pyro control
 - \ Battery driven
 - \ Preset firing sequence, easy programming
-

CIRCLE FLAMER X-F1800



- \ 210° swiveling angles
 - \ Up to 88 preset firing sequences
-

Circle Flamer II



- \ Aluminum housing structure, premium quality design
 - \ Higher and bigger flame up to 12m
 - \ The first wave flamer with flame monitoring function
 - \ Cascadable power cut-off E-stop connector, ARM indicator
 - \ Built-in fuel tank and built-in 18650 battery design
 - \ Automatic angle block detection and memory
-

CIRCLE FLAMER X-F3600



- \ Original innovation introduced by SHOWVEN®
 - \ Never seen flame effects up to 3 rotation cycles
 - \ Full cycle and half cycle mode switchable
 - \ Up to 182 preset firing sequences
-

SPECIFICATIONS:

CIRCLE FLAMER		X-F1800	X-F3600	CIRCLE FLAMER II
DIMENSION (mm)		590×360×370	640×360×370	610×330×330
NET WEIGHT (kg)		30	30	32
VOLTAGE		220V / 110V switchable, 50/60Hz		AC 100-240V, 50-60Hz
POWER		380W		550W
HOUSING MATERIAL		Stainless steel		Die-casting Aluminum
CONSUMABLE		ISOPAR, ISOPROPANOL		
FUEL TANK CAPACITY		10L		9L
MAX. EFFECT HEIGHT AND FUEL CONSUMPTION	NOZZLE EL	4-6m, 15ml/s		4-6m, 15ml/s
	NOZZLE L	6-8m, 30ml/s		6-8m, 30ml/s
	NOZZLE M	8-10m, 60ml/s		Not applicable
	NOZZLE PM	Not applicable		8-10m, 60ml/s
	NOZZLE H	Not applicable		10-12m, 95ml/s
MAX. FIRING DURATION		8s	8s	10s
EFFECT DIRECTION		-105 ~ 105°	360° * 3	-105 ~ 105°
CYCLE MODE		HALF MODE	HALF MODE / FULL MODE	HALF MODE
SOFTWARE ANGLE BLOCK		YES	YES	YES
HARDWARE ANGLE BLOCK		YES	YES	YES
ANGLE BLOCK DETECTION AND MEMORY		NO		YES
PRESET FIRING SEQUENCES		88	182	88
PUMP		Dual		
SOLENOID VALVE QTY		2		
IGNITION		High voltage electron ignition		
IGNITOR		Dual	Single	Dual
LIQUID LEVEL SENSOR		NO		YES
SUPPORT BATTERY DRIVEN		YES		YES, 18650 battery
AUTO REFUELING WITH uPumper mini		NO		YES
FLAME MONITORING		NO		YES
E-STOP CONNECTOR		NO		YES
ARM SAFETY INDICATOR		NO		YES
TILT SWITCH		YES		
BUILT IN ACCUMULATOR		YES		
USAGE IN RAIN		YES		
SAFETY SWITCH		YES		
POWER CONNECTORS		Neutrik®powerCON TRUE1		
XLR CONNECTORS		Neutrik® 3-pin and 5-pin XLR IN/OUT		IP65 rated 3-pin and 5-pin XLR IN/OUT
CONTROL		DMX, 9-60V signal		
DMX CHANNELS		6		
WORK TEMP.		-20°C~50°C		

GAS FLAMER COMMON FEATURES

- \ The safest gas flamer ever on the market
 - \ Super sensitive flame monitoring ensures that the fuel supply is switched off if the flame
 - \ Does not ignite after as short as a 0.1s firing duration
 - \ Cascadable power cut-off E-stop connector, all flammers can be controlled with a single E-stopper box
 - \ Dual high voltage electron igniter ensure successful ignition
 - \ Dual magnetic valves installed in series for double safety
 - \ Individual shut-off valve for each canister
 - \ Built-in 18650 battery powered design
 - \ 2 / 4 (optional) built-in gas cartridges positions
 - \ Different nozzles optional, 2-8m effects
 - \ Stainless steel housing, reliable and durable
 - \ Waterproof design, can be used in heavy rain
 - \ Safety lock with switchable test mode, safer for service and testing
 - \ Tilt protection, the tilt sensor will be activated when machine slant Over 45°.
-

uFlamer® Gasboom



- \ Patented "SFT" technology allows Gasboom with stronger burst and no flame tails after firing even in low temperature environment
-

uFlamer® X-Gasboom



- \ The first gas flamer with 180°waving angles
 - \ Waving motor with angle block detection and memory function
 - \ 83 preset firing sequences, easy programming
-

OPTIONAL NOZZLES FOR GASBOOM



GAS FLAMER SPECIFICATIONS:

GAS FLAMER	uFlamer® Gasboom	uFlamer® X-Gasboom
DIMENSION (mm)	320×310×325	400×360×350
WEIGHT (kg)	13	20
INPUT AND POWER	AC 100-240V, 50/60Hz, 200W	
HOUSING MATERIAL	304 stainless steel	
EFFECT DIRECTION	Vertical	180° (±90°)
PRESET FIRING SEQUENCES	NO	83
FLAME HEIGHT	2-8m (nozzle size, firing time etc)	
NOZZLE	G16,G20,G25,GA,GB	
E-STOP INTERFACE	Yes, can be connected in series	
DUAL MAGNETIC VALVES	Yes, connect in series	
HIGH SENSITIVE FLAME MONITORING	Yes, sensitivity up to 0.1s	
INTERFACE	NEUTRIK® POWERCON TRUE1 IN/OUT, IP65 rated 3-pin and 5-pin XLR IN/OUT	
CONTROL	DMX, 9-60V pyro signal	
IGNITION	High Voltage Electron Ignition*2	
BUILT-IN BATTERY DESIGN	Yes, 4*18650 battery	Yes, 8*18650 battery
WATERPROOF	Can be used in heavy rain	
FIRING DURATION	0.1-30s	
FILTRATION	Yes	
TILT SWITCH	YES	
FUEL	LPG propane or butane gas, gas cartridges bottle, aerosol cartridges	
CARTRIDGE HOLDER	Twin cartridge holder: 2 shut-off valves and 2 non-return valves Quadruple cartridge holder: 4 shut-off valves and 4 non-return valves (optional)	
MICRO FILTER	Yes, installed between shut-off and non-return valves	

uFlamer® Volcano



FEATURES

- \ 5-heads liquid flamer
- \ Independent control of each head
- \ Internal pump, plug and play system
- \ Flames up to 10m
- \ Reinforced stainless steel housing
- \ 25L built-in stainless steel fuel tank
- \ Compatible with automatic refueling station
- \ Real-time fuel level display
- \ Safety switch
- \ Integrated valve block design
- \ Premium and independent jet valve
- \ Customized water-proof igniter
- \ Rainproof design, can be used in rain
- \ DMX control, with both 3-pin and 5-pin XLR port
- \ Compatible with fireworks firing system

SPECIFICATIONS

- \ Dimension: 630×450×400mm
- \ Housing material: 304 stainless steel
- \ Weight: 48kg
- \ Work power: 2000W
- \ Input: 100-120V & 200-240V, 50/60hz
- \ Flame angles: 5 directions
- \ Maximum firing durations: 8s (\leq 4 nozzle firing together), 1.5s (5 nozzles)
- \ Fuel: isopar, isopropanol
- \ Fuel tank capacity: 25L
- \ Effect height: 8-10m (nozzle M), 6-8m (nozzle L), 4-6m (nozzle EL)
- \ Fuel consumption: 60ml/s(M), 30ml/s(L), 15ml/s(EL) per nozzle
- \ Preset firing sequence: 97
- \ Work temp.: -20°C to 50°C
- \ Interface: seetronic 3-pin & 5-pin XLR
Neutrik® powercon true1
- \ Ignition: high voltage electron ignition
- \ Control: DMX, 9-60V pyro signal
- \ Usage in rain: yes
- \ Built-in accumulator: yes
- \ Safety switch: yes
- \ Auto refueling input: yes
- \ DMX channels: 6

SHOWVEN® FLAME SYSTEM

SHOWVEN® FLAME SYSTEM is a hydraulic based flame effect solution for project or truss mounted installations. It consists of flame head, pump station, accessories such as hoses, cables etc. It can easily achieve remote fuel supply with the pump station and no nitrogen tank needed. Any installation direction of flame heads brings endless design inspiration to event planners. In order to meet the requirements of different application scenarios we designed three pump station (uPumper P20H, uPumper P20 and uPumper P4) and four flame heads model (uFlamer® X20, uFlamer® PF10, uFlamer® X1800, uFlamer® X5).

COMMON FEATURES

- \ Reinforced 304 stainless steel housing
- \ Remote fuel and pressure supply
- \ Built-in pump, no Nitrogen tank needed
- \ Electronic digital fuel level display
- \ Configured with pressure monitoring
- \ Intelligent solenoid valve block design ensure system pressure under control



\ uPumper P20



\ uPumper P4



\ uFlamer PF10



\ uFlamer X20



\ uFlamer X1800



\ uFlamer X5

uPumper mini



- \ Compact automatic refueling pump for SHOWVEN® new generation flamer.
 - \ Dimension: 222×114×122mm
 - \ Weight: 2.9kg
 - \ Input: DC12V from SHOWVEN® FLAMER
 - \ Apply to: uFlamer II, uFlamer Max, uFlamer Max Plus, Circle Flamer II
-

uPumper P4



- \ 32L fuel tank
 - \ Support 4 flame heads PF10 / uFlamer X1800
 - \ Fueling and pressurize function switchable
-

uPumper P20/P20H



- \ 250L extra large fuel tank
 - \ P20 support 20 units flame heads PF10 / uFlamer X1800, 4 units of uFlamer X5
 - \ P20H support 2-3 units uFlamer X20
-

uPumper Fueling Station

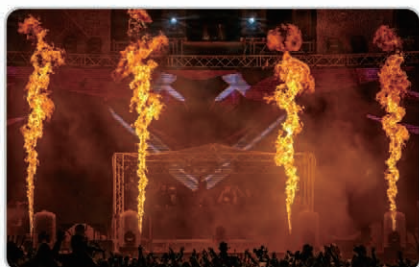


- \ 250L extra large fuel tank
 - \ Fueling station support uFlamer Volcano and uFlamer Max
-

SPECIFICATIONS:

PUMP STATION	uPumper P4	uPumper P20	uPumper P20H	Fueling Station
DIMENSION (mm)	580×420×460	1100×736×1095	1100×736×1095	1100×736×1095
NET WEIGHT (kg)	48	285	285	117kg
VOLTAGE	220V / 110V, 50/60Hz	AC380V		220V / 110V, 50/60Hz
WORK POWER	1800W	6KW	10KW	1800W
HOUSING MATERIAL	Stainless steel			
WORKING PRESSURE	0.8-1MPa	0.8-1.2MPa	4-5MPa	0.5-1MPa
SUPPORT FUEL	ISOPAR, ISOPROPANOL	ISOPAR L		
BUILT IN STAINLESS STEEL TANK	YES			
FLUID TANK CAPACITY	32L	250L		
PUMP OUTPUT	15L/min	110L/min		1000L/H
APPLY TO	PF10, X1800	PF10, X1800, X5	X20	Volcano, MAX, MAX PLUS
SUPPORT FLAME HEAD	4	8-20 heads, 4 heads(X5)	2-3 heads	Calculate based on pump output and firing frequency
WORKING MODE	Pressurize / Fueling	Pressurize		Fueling
DIGITAL FUEL LEVEL DISPLAY	YES			
PRESSURE MONITOR	YES			
E-STOP BUTTON	NO	YES		
E-STOP CONNECTOR	YES	NO		
ARM INDICATOR LIGHT	YES	NO		
FUEL OUTPUT COUPLER	4*ISO7241B G1/4 Female	ISO228 G1-1/4 external thread		ISO7241B G1/2 Female
FUEL INPUT QUICK COUPLER	ISO7241B G1/4 Male	NO		
POWER OUTPUT	4*Neutrik®powerCON TRUE1	NO		
POWER CONNECTORS	Neutrik®powerCON TRUE1	INDUSTRIAL POWER INPUT		Neutrik®powerCON TRUE1
XLR CONNECTORS	IP65 rated 3-pin and 5-pin XLR IN/OUT			
CONTROL	MANUAL, DMX, Wireless	DMX, AUTO		
DMX CHANNELS	6	1		
WORK TEMP.	-20°C~50°C			

uFlamer® PF10



- \ IP67 rated flame head with 10m output
- \ Dual igniter, dual solenoid valve, built-in accumulator
- \ Aluminum CNC machining structure, durable oxidation treated housing
- \ DMX / direct ON-OFF control customizable
- \ Unlimited installation angles

uFlamer® X20



- \ Flame head with effects up to 18m
- \ Triple igniter ensure successful ignition
- \ Reinforced 304 stainless steel housing
- \ DMX / 9-60V pyro signal control

uFlamer® X1800



- \ Flame head with 210° swivel angles
- \ Rainproof structure, can be used in rain
- \ Dual igniter, dual solenoid valve, built-in accumulator
- \ 88 preset firing sequences, easy programming
- \ DMX / 9-60V pyro signal control
- \ Unlimited installation angles

uFlamer® X5



- \ Flame head with 5 output angles
- \ Waterproof design, can be used in rain
- \ Unlimited installation angles with flames up to 10m
- \ Dual waterproof igniter for each nozzle ensure successful ignition
- \ Dual built-in accumulator
- \ 97 preset firing sequences, easy programming

SPECIFICATIONS:

FLAME HEAD		uFlamer® PF10	uFlamer® X20	uFlamer® X1800	uFlamer® X5
DIMENSION (mm)		250×200×410	330×330×320	370×380×380	435×380×405
NET WEIGHT (kg)		15	18	19	40
VOLTAGE		220V, 110V, 24V customizable	AC 100-240V, 50/60Hz		
POWER		120W	100W	260W	400W
HOUSING MATERIAL		Aluminum (CNC)	Stainless steel		
CONSUMABLE		ISOPAR, ISOPROPANOL	ISOPAR	ISOPAR, ISOPROPANOL	
WORK PRESSURE		8-12bar	40-60bar	8-12bar	
MAX. EFFECT HEIGHT AND FUEL CONSUMPTION	NOZZLE EL	4-6m, 15ml/s	Not Applicable	4-6m, 15ml/s	
	NOZZLE L	6-8m, 30ml/s	Not Applicable	6-8m, 30ml/s	
	NOZZLE M	8-10m, 60ml/s	Not Applicable	8-10m, 60ml/s	
	NOZZLE XXH	Not Applicable	16-18m, 1L/s	Not Applicable	
EFFECT DIRECTION		Vertical Up	Vertical Up	-105 ~ 105°	5 output angel
INSTALLATION ANGLE		Any direction	Vertical up	Any direction	
PRESET FIRING SEQUENCES		NO	NO	88	97
IGNITION		High voltage electron ignition			
IGNITOR		Dual	Triple	Dual	Dual for each nozzle
BUILT IN ACCUMULATOR		YES	NO	YES	
QUICK COUPLER		ISO7241B G1/4 Male			
USAGE IN RAIN		IP67	YES		
SAFETY SWITCH		NO	YES		
PRESSURE GAUGE		NO	YES		
POWER CONNECTORS		Voltage control version: IP67 rated power control IN. DMX version: IP67 rated XLR IN/OUT, IP67 rated POWER IN/OUT	Neutrik®powerCON TRUE1		
XLR CONNECTORS			IP65 rated 3-pin and 5-pin XLR IN/OUT		
CONTROL		DMX / Direct ON-OFF customizable	DMX / Direct ON-OFF customizable		
DMX CHANNELS		2 / 6	2	6	6
WORK TEMP.		-20°C~50°C			

FLAME SYSTEM ACCESSORIES:

Hose



\ Main Hose 1 1/4 DN32



\ Branch Hose 3/8 DN10

\ High pressure steel wire braided rubber hose.

\ Main hose is used to connect between uPumper P20 to fuel dispenser, uPumper P20H to accumulator module or connection between T-shape fuel dispensers.

\ Branch Hose with stainless steel quick coupler and Y shape filter, it is used to connect between fuel dispenser to flame head, accumulator module to uFlamer X20, uPumper P4 to flame head etc.

Accumulator module



\ Accumulator module is designed to stabilize the system pressure of uPumper P20H and uFlamer® X20 flame system, ensure stable firing height of X20. And also it can storage pressure ensure longer firing durations.

Fuel Dispenser



\ T-shape dispenser T 1 1/4-1 1/4-1 1/4



\ T-shape dispenser T 1 1/4-3/8-1 1/4



\ Fuel dispenser 1 TO 6



\ Fuel dispenser 1 TO 12

\ Fuel distribution between pump station and flame heads. We have different size T-shape dispenser, 1to6 fuel dispenser, 1to12 fuel dispenser etc.

Fake Flame



FEATURES

- \ Safe, no real flames
- \ Cost effective, water is the only consumable
- \ Advanced auto water refill system
- \ Independent ball valve drain hole for inner and outer water tank
- \ Water level sensor
- \ Penn Elcom casters
- \ IP55 rated waterproof
- \ Adjustable "flame" height
- \ Adjustable "flame" brightness
- \ DMX controllable

SPECIFICATIONS

- \ Dimension: 760×460×660mm
- \ Weight: 35kg
- \ Voltage: AC200-240V / AC100-120V, 50/60Hz
- \ Work Power: 800W
- \ LED: 3W, 68pcs
- \ Tank Capacity: 12L
- \ Consumable: Water (purified water is preferred)
- \ Interface: 3-pin and 5-pin XLR
- \ Control: DMX, 4 Channels
- \ Fake Flame Height: 1-2m
- \ Auto water refill from faucet: Yes
- \ Fake Flame Height Adjustable: Yes
- \ Fake Flame Brightness Adjustable: Yes
- \ Wireless Remote: Yes

SMOKE



SMOKE / BUBBLE / DROP

SMOKE and fog are most widely used effects on stage, and also the most diverse special effect category. In order to meet our customer's requirement, we improved the existing heating method to decrease blocking risks and elongate heating aluminum service life, simplify the internal complex pipeline connections as much as possible to make the service easier; Based on those practical innovations designs, we developed a wide range of smoke series atmospheric machines from SONICBOOM® series CO₂ jet simulator, CREEPER series low fog generator, pro fog machine to haze generators. Besides wide product range, for each effect category we developed a variety of models of machine to meet the needs of different application scenarios. This year, we introduced the SONICBOOM® JET based on our patented supercharging technology, which has become the CO₂ jet simulator with closest effect to CO₂ jet available on market.



SONICBOOM®



LOW FOG



PRO FOG



HAZE

SONICBOOM® X / SONICBOOM® PLUS



- \ Instant smoke generation, as short as 0.2s
- \ Fluid driven, no need of CO₂ tank, safer and easy carry
- \ No generation of CO₂, environmental friendly
- \ Super long stable effects time after fill up
- \ Fast smoke dissipate with original fluid
- \ Cost effective consumables
- \ Excellent heating module design, fast temp. recovery
- \ Low power mode, lower power supply requirement
- \ Unique constant pressure system, consistent smoke effect
- \ Pipeline integration technology, reliable, easy maintenance and stronger output
- \ Independent smoke column color change
- \ Easy installation at any angles even place upside down
- \ Dual smoke generation system, dual output for maximum effects (PLUS version)

SONICBOOM® II



- \ High pressure pump and auto constant pressure control ensure stronger burst
 - \ Fast pressure rebuilt, repeated continuous shots in 1s
 - \ Dual massive smoke output
 - \ Stainless steel structure and waterproof design, can be used in rain
 - \ Compact structure, easy for transportation
 - \ Unique mold fluid tank, no splash even transport with fog fluid
 - \ 3.2' color LCD screen, easy operation
 - \ multi-angle installations even upside down
-

SPECIFICATIONS:

CO ₂ JET SIMULATOR	SONICBOOM® X	SONICBOOM® PLUS	SONICBOOM® II
DIMENSION (mm)	482×408×215	500×324×325	346×305×291
NET WEIGHT (kg)	17.2	28	23
VOLTAGE	220V: 3000W / 1500W 110V: 2000W	220V: 3000W / 1800W 110V: 2400W / 1800W	
HOUSING MATERIAL	Carbon steel	Stainless iron	Stainless steel
HEAT UP TIME	9-11min	9-11min	8-10min
CONSUMABLE	FX-S fog fluid	FX-S fog fluid	FX-S / FX-M fog fluid
FOG FLUID TANK CAPACITY	2.5L	5L	2L
EFFECT HEIGHT	10m	10m	10m
MAX. OUTPUT DURATION	8s	10s	8s
MAX. FOG OUTPUT	55000cuft/min	80000cuft/min	90000cuft/min
FOG FLUID CONSUMPTION	200ml/min	330ml/min	400ml/min
MACHINE INSTALLATION ANGLE	Any direction	Any direction	Any direction
LED	5W * 35pcs	9W * 38pcs	9W * 17pcs
INTERGRATED VALVE BLOCK	YES	YES	YES
SMOKE INSTANT STOP	YES	YES	YES
HIGH PRESSURE PUMP	NO	NO	YES
POWER CONNECTORS	Neutrik®powerCON	Neutrik®powerCON	Neutrik®powerCON TRUE1
XLR CONNECTORS	NEUTRIK® 3-pin and 5-pin XLR IN/OUT	NEUTRIK® 3-pin and 5-pin XLR IN/OUT	IP65 rated 3-pin or 5-pin XLR IN/OUT
CONTROL	DMX	DMX	DMX
DMX CHANNELS	1 / 11	1 / 11 / 14	1 / 11

SONICBOOM® JET



- \ Real CO₂ jet simulator, with closest effect to CO₂ jet available on market
- \ Patented supercharging technology, stronger burst
- \ Dense smoke column up to 15m
- \ Powerful dual smoke generation system, dual output
- \ Whole metal piping system, reliable and longer service life
- \ 6L built-in stainless steel fluid tank with mechanical fluid level indicator
- \ Unique constant pressure system, consistent smoke effect;
- \ 30pcs 9W LED, independent smoke column color change.
- \ No generation of CO₂, environmental friendly
- \ Unlimited installation angles even up-side-down
- \ Cost effective consumables

SONICBOOM® ReCO₂



- \ Instant response, real CO₂ Jet effect simulator
 - \ Fast pressure rebuilt, repeated continuous shots in 1s
 - \ Only fog fluid needed, no more CO₂ bottles
 - \ Quick smoke dissipate with FX-S
 - \ Massive output up to 15m
 - \ Clean effect, no smoke output during standby
 - \ DMX controllable color smoke column
 - \ 5L built-in tank, 10min cumulative output when fully loaded
 - \ Multi-angle installations
-

SPECIFICATIONS:

CO ₂ JET SIMULATOR	SONICBOOM® JET	SONICBOOM® ReCO ₂
DIMENSION (mm)	546×331×372	432×325×365
NET WEIGHT (kg)	37	30
VOLTAGE	220V: 3000W / 1800W 110V: 2400W / 1800W	220V: 3000W/1800W 110V: 2400W/1800W
HOUSING MATERIAL	Stainless steel	Stainless steel
HEAT UP TIME	13min	12-15min
CONSUMABLE	FX-S / FX-M fog fluid	FX-S / FX-M fog fluid
BUILT IN STAINLESS STEEL TANK	YES	YES
FOG FLUID TANK CAPACITY	6L	5L
EFFECT HEIGHT	15m	15m
MAX. FOG OUTPUT	150000cuft/min	120000cuft/min
MAX. OUTPUT DURATION	6s	8s
FOG FLUID CONSUMPTION	900ml/min	500ml/min
MACHINE INSTALLATION ANGLE	Any direction	Any direction
LED	9W * 30pcs	9W * 30pcs
INTERGRATED VALVE BLOCK	YES	YES
SMOKE INSTANT STOP	YES	YES
HIGH PRESSURE PUMP	YES	YES
HIGH SPEED TURBOFAN	NO	YES
POWER CONNECTORS	Neutrik®powerCON TRUE1	Neutrik®powerCON TRUE1
XLR CONNECTORS	NEUTRIK® 3-pin and 5-pin XLR IN/OUT	IP65 rated 3-pin and 5-pin XLR IN/OUT
CONTROL	DMX	DMX
DMX CHANNELS	1 / 11	1 / 11 / 12

Creeper AQ series Low Fog Generator

COMMON FEATURES

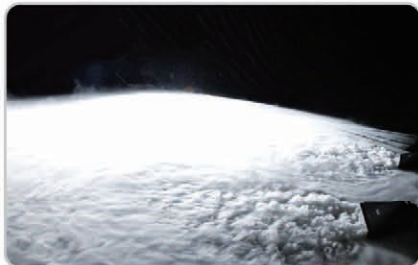
- \ Ultrasound based low fog generator
- \ Consumables only water and fog fluid, no need of dry ice
- \ Molded enclosure, lighter, durable as well as rustless
- \ Latest rapid heating technology, 1-2min heating up time
- \ Low-water sensor
- \ Adjustable fog density and fan speed, versatile application to meet different requirements
- \ Patented fog leakage prevention technology, no fog leakage even refill the machine when it is working
- \ DMX, manual or wireless remote control

Creeper AQ mini



- \ Compact, easy to carry
- \ 2L fluid tank, 6.5L water tank, support external water tank

Creeper AQ / Creeper AQ PLUS



- \ 30 / 40 (PLUS) heads atomizers, thicker fog output
- \ Advanced auto water refill system
- \ Abrasion-resistant silent caster
- \ Weather proof structure design
- \ Adjustable moisture

SPECIFICATIONS:

LOW FOG GENERATOR	CREEPER AQ mini	CREEPER AQ	CREEPER AQ PLUS
DIMENSION (mm)	460×300×324	805×390×480	950×500×540
NET WEIGHT (kg)	15	35	48
VOLTAGE	220V / 110V, 50/60Hz		
POWER	2000W	2000W	2500W
HOUSING MATERIAL	PE		
HEAT UP TIME	1-2min		
CONSUMABLE	FX-M fog fluid, Water		
OUTPUT NOZZLE	1	1	2
ATOMIZER HEADS	20	30	40
WATER TANK CAPACITY	6.5L	24L	35L
FOG FLUID TANK CAPACITY	2L	3.3L	
SUPPORT EXTERIOR WATER TANK	YES	NO	
AUTO WATER REFILLING	NO	YES	
MAX. FOG FLUID CONSUMPTION	32ml/min		
MAX.WATER CONSUMPTION	250ml/min	375ml/min	500ml/min
MAX. FOG OUTPUT	10000cuft/min	15000cuft/min	20000cuft/min
FOG OUTPUT ADJUSTMENT	1-100%		
FAN SPEED ADJUSTMENT	1-100%		
EXTERIOR WATER TANK SENSOR	NO	YES	
INTERIOR WATER TANK SENSOR	YES		
CONTINUOUS OUTPUT	YES		
MAX. COVERAGE	200 m²	300 m²	400 m²
POWER CONNECTORS	Neutrik®powerCON	Neutrik®powerCON TRUE1	
XLR CONNECTORS	NEUTRIK® 3-pin XLR IN/OUT	IP65 rated 3-pin and 5-pin XLR IN/OUT	
USAGE IN RAIN	NO	YES	
CONTROL	MANUAL, DMX, Wireless		
DMX CHANNELS	2	2 / 3	

Creeper ICE series dry ice machine



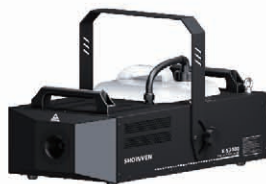
FEATURES

- \ Massive fog output, large coverage area with excellent ground adherence
- \ CREEPER ICE can cover about 500m², the first minute can cover about 250m²
CREEPER ICE PLUS can cover about 800m², the first minute can cover about 400m²
- \ Robust molded enclosure, exquisite design
- \ Abrasion-resistant silent caster, built for complex road conditions
CREEPER ICE equipped with 75mm casters
CREEPER ICE PLUS equipped with 100*36mm penn elcom casters
- \ Water spray structure design, instead of immerse dry ice into water
Achieve continuous variable fog output control
No mechanical lifting structure inside, better stability
Fast ON/OFF, timely response to the stage effect requirement
- \ Water tank and dry ice basket separate design, longer dry ice storage in machine
- \ Hidden water tank, safer for operator
- \ Huge water and dry ice reservoir
CREEPER ICE: 55L water reservoir, 15kg dry ice basket
CREEPER ICE PLUS: 75L water reservoir, 30kg dry ice basket (Largest available on market)
- \ One feeding can support multi time use
- \ Dual/Triple heating system, meet different power supply conditions
CREEPER ICE: 3000W and 6000W switchable, work power adjustable from 50% to 100%
CREEPER ICE PLUS: 3000W and 9000W switchable, need to change power cable
- \ Reserved drainage valve for easier residual water drainage
- \ Weather proof design
- \ Standard DMX control, both 3-PIN and 5-PIN

SPECIFICATIONS:

LOW FOG GENERATOR	CREEPER ICE	CREEPER ICE PLUS
DIMENSION (mm)	492×584×760	642×584×887
NET WEIGHT (kg)	35	45
VOLTAGE	220V / 110V, 50/60Hz	220V / 110V, 50/60Hz
POWER	220V: 3000W / 6000W 110V: 1600W / 3200W	220V: 3000W / 9000W 110V: 1600W / 4800W
HOUSING MATERIAL	PE	PE
HEAT UP TIME	30min (6000W) 50min (3200W)	40min (9000W) 70min (4800W)
CONSUMABLE	Dry ice, Water	Dry ice, Water
OUTPUT NOZZLE	1	2
DRY ICE CAPACITY	15kg	30kg
WATER TANK CAPACITY	55L	75L
WATER LEVEL INDICATOR	YES	YES
OUTPUT ADJUSTMENT	50-100%	50-100%
MAX. COVERAGE	500 m ²	800 m ²
CUMULATIVE OUTPUT TIME	5-10min	5-10min
POWER CONNECTORS	NEUTRIK®POWERCON TRUE1	5-PIN INDUSTRIAL SOCKET, POWERCON TRUE1 CUSTOMIZABLE
XLR CONNECTORS	IP65 RATED 3-PIN AND 5-PIN XLR IN/OUT	IP65 RATED 3-PIN AND 5-PIN XLR IN/OUT
USAGE IN RAIN	YES	YES
CONTROL	MANUAL, DMX, WIRELESS	MANUAL, DMX, WIRELESS
DMX CHANNELS	1	1

X-S3000 PRO FOG



- \ Rotary output control button, convenient smoke amount adjustment
- \ Super long effect time, max output up to 40s, continuously in low output mode
- \ Improved heating structure, less clogging and longer service life
- \ Optimized atomizer with high precision circuit, ensure more uniform fog effect
- \ Neutrik®powerCON, 3-pin and 5-pin DMX connectors

P-S1500 FOG



- \ Smart yet robust fog output
- \ Optimized atomizer with high precision circuit, ensure more uniform smoke effect
- \ Improved heating structure, less clogging and longer service life
- \ Wireless control adopts redundancy technology, better anti-interference ability
- \ Neutrik®powerCON and DMX connectors

X-H2 Hazer



- \ Massive haze output with wide coverage
- \ Flight case design with casters, convenient for touring
- \ Dual pump system, can fueling machine in working status
- \ Low fluid protection with pressure monitoring
- \ Haze output angle adjustable with baffle plate
- \ Integrated molding blower shell, quieter output

P-H3 Hazer



- \ Enlarged heating block, stable haze output, uniform haze effect even in low fog output
- \ DC fan, durable and stable output
- \ Anti-fluid drip design
- \ New generation quiet technology, larger air volume lower noisy
- \ Odorless haze output with original fluid
- \ 5.5h continuous working after fill up

SPECIFICATIONS:

MACHINE	X-S3000	P-S1500	X-H2	P-H3
DIMENSION (mm)	660×404×290	500×315×260	845×510×850	360 x 300 x 230
NET WEIGHT (kg)	16.6	13	75	11
VOLTAGE	220V / 110V, 50/60Hz			
POWER	220V: 3000W 110V: 2000W	1500W	220V: 3000W	1500W
HOUSING MATERIAL	CARBON STEEL		Flightcase	Carbon steel
HEAT UP TIME	7min	7min	10min	4min
CONSUMABLE	FX-M fog fluid		FX-HF fog fluid	
FOG FLUID TANK CAPACITY	9L	3L	4L *2	5L
MAX. OUTPUT DISTANCE	10m	7m	Not applicable	
MAX. FOG OUTPUT	40000cuft/min	30000cuft/min	50000cuft/min	6000cuft/min
OUTPUT DURATION	40s @100% output, continuous @low output	15s @100% output, continuous @low output	Continuous @output<80%	Continuous
OUTPUT ADJUSTMENT	1-100%			
FAN SPEED ADJUSTMENT	Not applicable		1-100%	
MAX. FOG FLUID CONSUMPTION	250ml/min		350ml/min	15ml/min
POWER CONNECTORS	Neutrik®powerCON			Power IN
XLR CONNECTORS	NEUTRIK® 3-pin and 5-pin XLR IN/OUT	NEUTRIK® 3-pin XLR IN/OUT	NEUTRIK® 3-pin and 5-pin XLR IN/OUT	3-pin XLR IN/OUT
CONTROL	MANUAL, DMX, Wireless			
DMX CHANNELS	1		2	

CO₂ JET X-C1



FEATURES

- \ Compact size, Stainless steel housing
- \ 0~180° multi-output angles adjustable
- \ DNP G3/8" quick coupler

SPECIFICATIONS

- \ Dimension: 285×192×192mm
- \ Net Weight: 5kg
- \ Voltage: 110V / 220V, 50/60Hz
- \ Power: 50W
- \ Max Output Height: 8-10m



- \ Support both DMX and direct on-off control
- \ Powerful output up to 8-10m
- \ Neutrik® PowerCON TRUE1 power connector

- \ Control: DMX, Direct on-off voltage control
- \ Pressure: 60bar/870PSI
- \ Power Connectors: Neutrik® PowerCON TRUE1
- \ Interface: 3-pin XLR IN/OUT (5-pin customizable)
- \ Output angle: 0-180 degree (13 angle options)

Bubble Machine

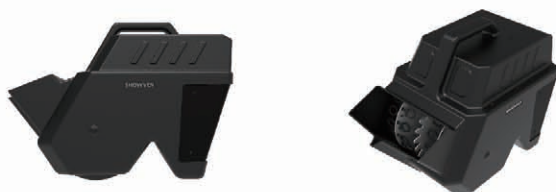


FEATURES

- \ Compact molding structure, leak proof
- \ Higher bubble output, wider coverage
- \ Enormous bubble generation

SPECIFICATIONS

- \ Dimension: 435×266×305mm
- \ Weight: 4.8kg
- \ Voltage: AC100-240V, 50/60Hz
- \ Work Power: 30W
- \ Fluid Tray Capacity: 2L



- \ 18650 battery powered design, support 3h continuous output (depend on battery)
- \ Convenient drainage of remaining bubble fluid
- \ Control: DMX, MANUAL, WIRELESS REMOTE

- \ Bubble Fluid Consumption: 25ml/min
- \ Battery: 3pcs*18650, support 3h running time
- \ Interface: 3-pin XLR
- \ Control: DMX, manual, wireless remote
- \ Output: Up to 8m

KABUKI DROP



FEATURES

- \ Compact and exquisite design
- \ Simple structure, extremely reliable
- \ PowerCON TRUE1 TOP chassis connectors

SPECIFICATIONS

- \ Dimension: 76.5×82.5×230mm (clamps included)
- \ Weight: 1kg
- \ Input: AC110-120V/220-240V, 50/60Hz
- \ Work Power: 30W



- \ Powerful electromagnet, 20kg load capacity
- \ Quick and easy to install
- \ Simple to operate, direct on-off control

- \ Load Capacity: 20kg
- \ Control: Direct on-off voltage control
- \ Power Cable: Not included

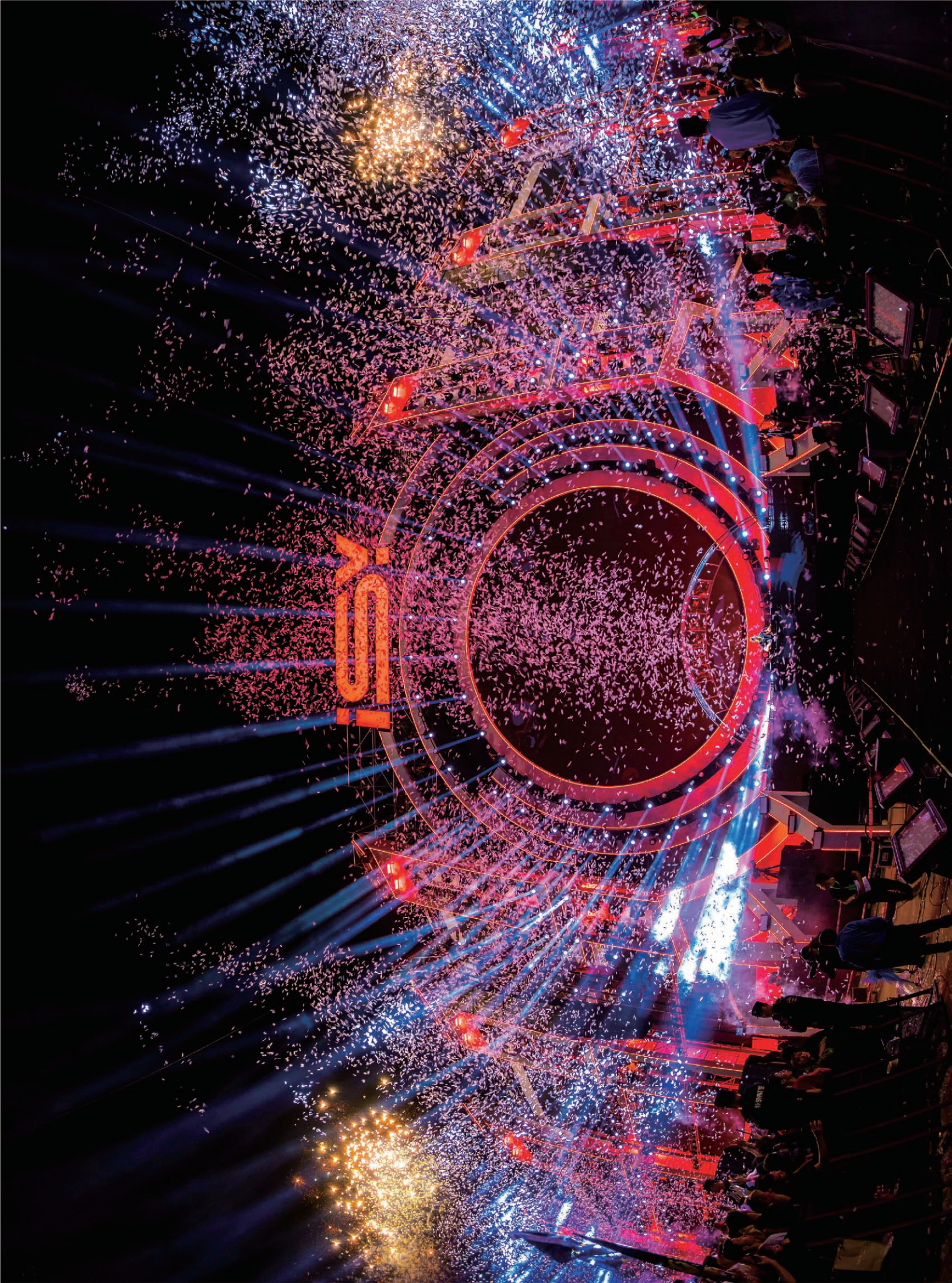
FLUID



- \ Ready to use
- \ Environmental friendly
- \ In compliance with RoHS
- \ High quality, compatible with SHOWVEN series machines

Product Name	FX-S	FX-M	FX-HF	FX-SN	FX-BS
Description	PRO QUICK DISSIPATING FOG FLUID	PRO MEDIUM FOG FLUID	PRO HAZE FLUID	PRO SNOW FLUID	PRO BUBBLE FLUID
Package	3Lx4/carton, 25L/carton				
Support Model	SONICBOOM series	Pro fog machine, SONICBOOM JET / ReCO2 / II	Hazer	Snow machine	Bubble machine

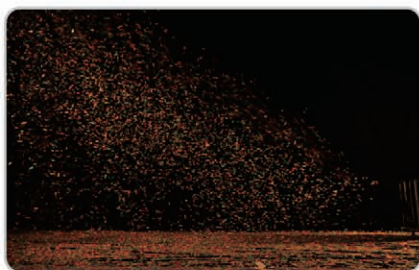
CONFETTI



CONFETTI

From large-scale events in stadiums to small family gatherings, confetti becomes a must for celebrations. China is the raw material supply center and manufacturing center for CONFETTI, We take this advantage by sourcing high quality raw materials, combined with our modernized production facilities and production experiences, aim to provide customers with premium confetti at a reasonable price through our factory direct supply. Besides consumable we also launched a series confetti launcher from blower to shotter to meet different events requirements.

uFetti Blower CB22



- \ Up to 18m confetti output
- \ Farther and wider confetti spread with customized high-power blower and optimized Venturi tube design
- \ Dual independently controllable hopper, automatic confetti dosing
- \ Adjustable output density and output angles
- \ Real-time motor running status monitoring
- \ Multi air inlet structure, machine keeps working even the air inlets on panel are blocked
- \ Rugged design with premium accessories, strong and durable, suitable for touring
- \ Both DMX and Manual controllable

uFetti Blower CB21



- \ Compact yet powerful confetti blower, upto 18m output distance
- \ 45L automatic confetti dosing hopper, 10kg paper confetti loading capacity
- \ Both hardware and software adjustable confetti output density, ensure huge output
- \ Durable patented brush feeding structure
- \ Compatible with used confetti and large size confetti
- \ Both DMX and Manual controllable
- \ Wider and angle adjustable output nozzle, wider confetti spread
- \ 110V / 220V powered system

uFetti Blower CB16



- \ DMX controllable output density
- \ 9L automatic confetti dosing hopper
- \ Up to 10m output distance
- \ 2-15min continuous output durations
- \ Adjustable confetti output angles

SPECIFICATIONS:

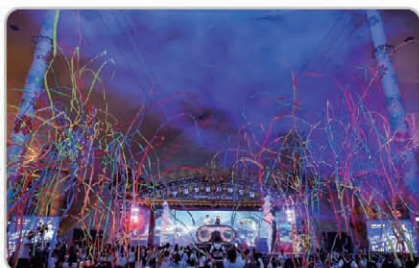
uFetti Blower		CB22	CB21	CB16
DIMENSION (mm)		880×660×1295	926×540×990	573×324×384
NET WEIGHT (kg)		112	106	19
VOLTAGE		AC200-240V / AC100-120V, 50/60Hz		
POWER		2200W	2400W	1600W
CONTINUOUS OUTPUT DURATIONS WITH FULL LOAD		5-14min	7-20min	2-15min
HOPPER QTY		2	1	1
HOPPER CAPACITY	PAPER CONFETTI	2kg*2	10kg	2kg
	METALLIC CONFETTI	4kg*2	20kg	4kg
MAX. CONSUMPTION RATE		0.9kg/min (paper) 1.8kg/min (metallic)	1kg/min (paper) 2kg/min (metallic)	1kg/min (paper) 2kg/min (metallic)
OUTPUT		18m	18m	10m
ADJUSTABLE OUTPUT ANGELS		40°-90° (6 adjustable angles)	50°-90°	YES
BLOWER SPEED ADJUSTABLE		YES	YES (220V version) NO (110V version)	YES
DMX INTERFACE		3-pin and 5-pin XLR IN/OUT		
CONTROL		Manual, DMX		
OUTPUT DENSITY ADJUSTABLE		YES		
ARM SAFETY INDICATOR		YES		

uFetti Shooter

Common Features

- \ Convenient and easy angle adjustment
- \ PED certified tank
- \ True wireless system
- \ Built-in air compressor with external air coupling connector available
- \ Durable stainless steel tank, launch pipe, and connectors
- \ Multi-safety configurations: cascable power cut-off E-stop connector, ARM indicator light, safety switch, etc.
- \ Touch screen
- \ 3-PIN, 5-PIN DMX and 9-60V pyro signal port\ Adjustable pressure up to 8bar
- \ Digital and mechanical pressure display

uFetti Shooter CA12



- \ Up to 43m full load output (20m streamers)
- \ 5L large capacity stainless steel launch pipe with self-locking coupler
- \ 18650 battery-powered system

uFetti Shooter CA36



- \ Up to 45m full load output (20m streamers)
- \ 10L large capacity stainless steel launch pipe with self-locking coupler

uFetti Shot CL04



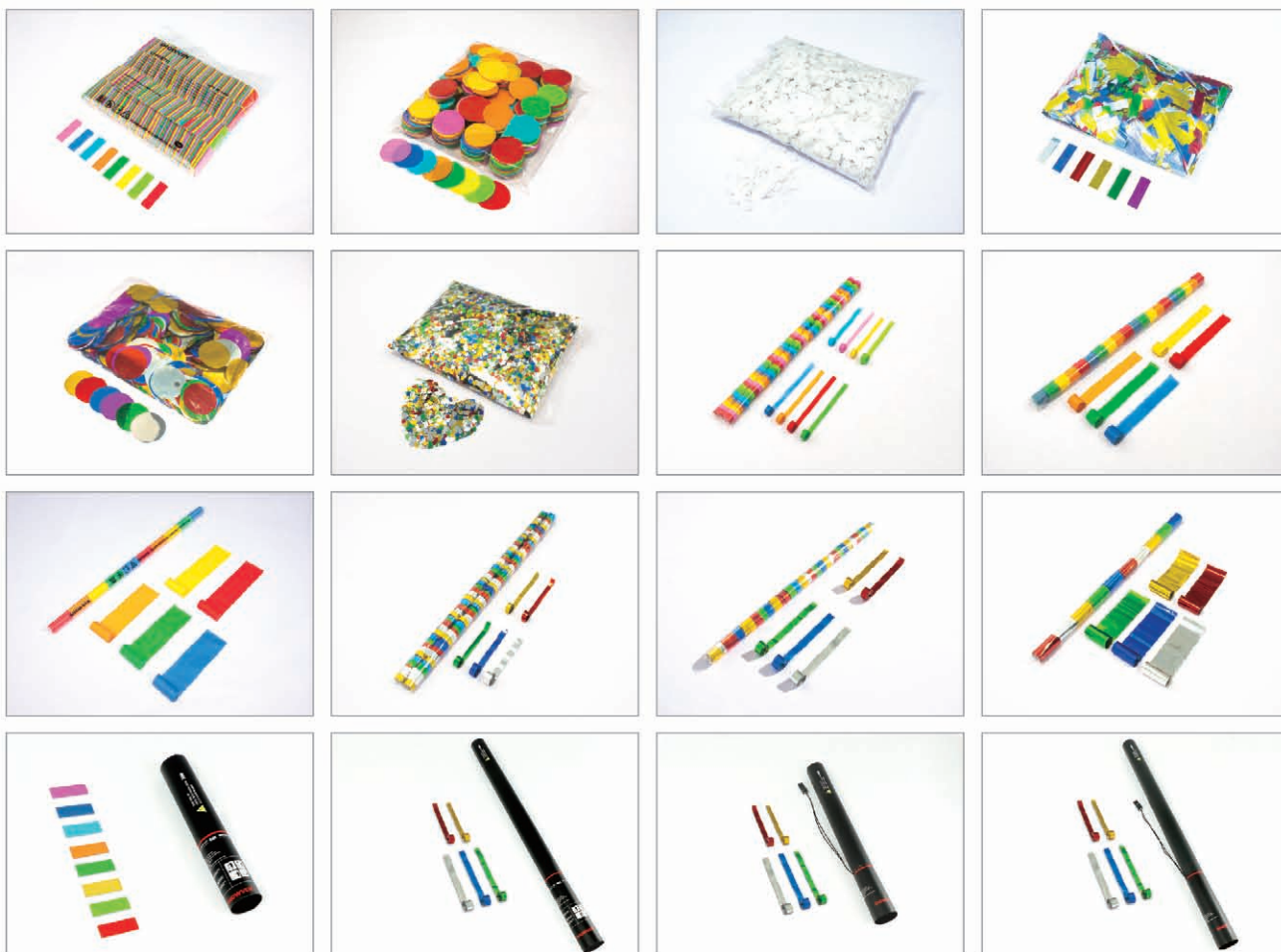
- \ 18650 Battery powered
- \ Both DMX and remote control
- \ High power guarantee reliable trigger
- \ Plug structure design ensure accurate output angle
- \ Cannon indicator light

- \ Dimension: 582×185×290mm
- \ Weight: 8.5kg
- \ Input: AC 100-240V, 50/60Hz
- \ Power: 300W
- \ Battery Powered: Yes, 6*18650
- \ Control: DMX, Wireless

SPECIFICATIONS:

uFetti Shooter	uFetti Shooter CA12	uFetti Shooter CA36
DIMENSION (mm)	600×560×880	730×645×880
NET WEIGHT (kg)	88	121
VOLTAGE	220V / 110V switchable, 50/60Hz	AC 100-240V, 50-60Hz
POWER	180W	220W
LED WARNING LIGHTS	Yes, ARM	
CONTROL	DMX, DC24V (3A) signal	
INTERFACE	IP65 rated 3-pin&5-pin XLR IN/OUT	
E-STOP	Yes	
OUTPUT ANGLES	-27°~41° (12 adjustable angles)	
BATTERY POWERED DESIGN	Yes (16pcs 18650 battery)	NO
TANK CAPACITY	12L	36L
MAX. PRESSURE	4-8bar (58-116psi) adjustable	
MAX.EFFECT DISTANCE	streamers(43m); Confetti(22m)	streamers(45m); Confetti(22m)
LAUNCH PIPE CAPACITY	5L	10L

CONFETTI, STREAMERS, CANNONS



FEATURES

- \ Factory direct supply
- \ Premium quality
- \ Multi colors and shapes
- \ Flameproof and colorfast
- \ Biodegradable tissue paper
- \ Accept customization
- \ Standardized production workshop

CONFETTI SPECIFICATIONS

\ CONFETTI SHAPE:

Rectangle, Round, Square, Heart, Butterfly etc.

\ STREAMER SIZE:

1cm*5m (100pcs/bag), 1.5cm*10m (32pcs/bag), 2.5cm*10m (20pcs/bag), 5cm*10m (10pcs/bag), 2.5cm*20m (20pcs/bag), 5cm*20m (10pcs/bag).

\ CANNON SIZE:

28cm, 50cm, 80cm

\ CANNON TYPE:

Handheld, Electric

\ MATERIAL:

Tissue paper, Metallic PVC, rice paper

\ COLORS:

TISSUE PAPER: Multicolor, White, Pink, Blue, Light blue, Orange, Green, Light green, Yellow, Red, Silver, Gold etc.
Metallic PVC: Multicolor, Gold, Red, Blue, Purple, Green, Silver etc.

LASERS

SHOWVEN® LASER

NEW TECHNOLOGIES EMPOWERS SHOWVEN'S SECOND-GENERATION LASER PRODUCTS.

1# RGB+TEC FULL DIGITAL DRIVER

- \ Texas Instruments's latest digital controller, full digital calibration and real-time status monitoring, excellent linearity, reliability and accuracy in color performance.
- \ Single-ended Class D topology design, extremely fast response as short as 5μs and accurate control, high luminous efficiency and low heat generation
- \ Optimize circuit design and EMI suppression technology, ensure stable current output, reduce light spot jitter and power supply noise
- \ Built-in over-current, over-voltage and over-temperature protection, enhance system safety and lifespan

2# ENHANCED TEC COOLING

Completely isolation of cold and hot sides, more efficient cooling effect to the laser compartment, ensuring cooling temperature inside laser module even in an ambient temp. of up to 45 degrees, greatly extends the service life of LD.

3# THREE LAYER STRUCTURE DESIGN (NEW Maiman 30/40)

- \ Separate laser module, chamber better dustproof and waterproof performance
- \ Structurally isolates heat from power supply, driver and mainboard etc from affecting the laser module, extends the service life of LD.

4# SAFETY FEATURES

- \ Safety switch key
- \ Remote emergency stop (can be connected in daisy chain)
- \ Emission delay
- \ Top cover interlock
- \ Electromechanical shutter (optional)
- \ Manual restart after power failure (optional)

5# OPTICAL FEATURES

- \ Guaranteed optical output
- \ Optimized self-made laser module with fast axis compression (FAC) RGB LD, ensure smaller beam size
- \ High quality Mitsubishi, Nichia, Osram LD
- \ Independent external RGB and full mirror beam alignment window, easier maintenance (Maiman 30/40)

6# OTHER FEATURES

- \ Four direction independently adjustable laser shield plate, more flexible positioning, providing better physical protection (new Maiman 30/40)
- \ PWM cooling fan, lower noisy
- \ Compact size and light-weighted
- \ IP65 rated water and dust protection
- \ 360° rotatable handle, easy projection angle adjustment
- \ 1000Mbps ethernet IN/OUT
- \ DMX IN/OUT, ILDA IN/OUT, POWER IN/OUT etc comprehensive interfaces

SPECIFICATIONS:



Model	Maiman10	Maiman15 / 20	Maiman30 / 40	Maiman60
Power Supply	AC100-240V 50/60Hz			
Output (max)	10W	15W / 20W	30W / 40W	60W
R module	3W	4W / 6W	8W / 10W	15W
	LD Mitsubishi 638nm			
G module	3W	5W / 6W	10W / 14W	20W
	LD Nichia 520nm			
B module	4W	6W / 8W	12W / 16W	25W
	LD Osram 445nm			
Scanning System	$\pm 30^\circ$ 40K		$\pm 30^\circ$ 35K / $\pm 25^\circ$ 30K	$\pm 20^\circ$ 25K
Beam Size	3.5×6.5mm	5×6.5mm / 6×6.5mm	6×7mm / 6×8mm	7×12mm
Beam Divergence	<1.0mrad	<1.0mrad / <1.1mrad	<1.2mrad	<1.5mrad
Analogue modulation	100k Analog/TTL			
IP level	IP65			
Work Temp.	-20-40℃		-20-45℃	-20-40℃
Weight (kg)	11	14 / 15.5	20 / 21	53
Dimension (mm)	297×283×180	407×276×180	415×260×220	630×495×253
System Control	Ethernet, DMX, ILDA, Auto, SD card, Sound, FB4 (optional)			
Compliant with	EN60825-1			
Safety Features	Safety Switch Key, Remote Emergency Stop System (can be connected in daisy chain), emission delay, top cover interlock etc.			

CONSOLE & PYRO



CONSOLE & PYRO

Special effects are essentials for festivals or events. It makes the atmospheric of events go crazy. Some effects such as flamer, CO₂ jet etc. which with flames or high pressure may cause serious accident if not handled properly. Even those effects are widely used but unfortunately, there is no professional and reliable console specially designed for SFX devices. When we first launch SPARKULAR®, in order to make it easier and safer operation, we developed compatible console that is HOST CONTROLLER ZK6200/6300, it is a preprogrammed controller which can firing SHOWVEN® lot of different devices. As those years' experiences in SFX industry, we are more and more aware the importance of the safer and easier control of different SFX devices at the same time with one console, other than use a complicated lighting console, we developed FXcommander, it allows to control all DMX device such as SPARKULAR®, FLAMER, FOG, HAZE, CONFETTI etc. in a safe and professional way. And for more convenient control and handling of special effects, we introduced the most compact special effect console FXbutton for small shows.

Further, as pyro and special effects devices are usually used together in outdoor events, the synchronization between fireworks with special effects becomes a trend. Together with our PyroSlave, FXcommander makes this possible by programming and firing DMX and Pyro together with a single console. Large scale shows with special effects and fireworks can be sync with music precisely through our professional windows software FXcommander_Editor. The FXcommander is setting the safety standard for the special effects control.

FXcommander®



FEATURES

- \ A dedicated console for SFX device and fireworks set off
- \ Customized for SFX operator to control FX device professionally and safely
- \ Pyro arm switch, DMX arm switch, Deadman button ensure zero false trigger
- \ PANIC - Emergency stop at any time
- \ Safety channel specially designed for SFX device
- \ Dual antenna, ensure fast, stable and reliable PYRO signal transmission
- \ RDMX communication with SHOWVEN® device, device status real time monitoring
- \ 8 keyboard shortcut key, can set to tap or lock mode, ensure quick and reliable trigger, extendable with SHOWVEN® keypad
- \ 10.1" capacitance touch screen
- \ Presetting device and effect lib for fast programming
- \ 5 preset effect rules for easier programming
- \ Easy and fast improvisation programming
- \ Convenient manual pyro firing edit
- \ Demonstration function for programmed show
- \ Scene switch, max. support 4 scenes, each scene support 128 cues
- \ USB port support software update, show file update and backup, device lib update etc.
- \ Variety interfaces: 3-pin and 5-pin DMX, MIDI input, LTC input, Audio Output, USB
- \ Wireless: 2.4GHz wireless DMX signal, dual band wireless pyro signal
- \ Battery driven with built in battery
- \ Windows FXcommander_Editor Software can generate project list table, minimize operator's workload.
- \ Dual-core processor, smooth operation
- \ MIDI, LTC receiver, support SMPTE time code
- \ Windows FXcommander_Editor Software ensure precise programming
- \ Built-in audio signal output, achieve accurate synchronization between music and effects
- \ Multi language: English, Español, Français, Japanese, Nederlands, Português etc.
- \ Unlimited self-editable colors
- \ User defined CUE icon

SPECIFICATIONS

- \ Dimension: 314×270×65mm
- \ Weight: 4kg
- \ Input: AC100-240V, 50/60Hz
- \ Work Power: 20W
- \ Casing material: Aluminium
- \ Battery Powered: Yes
- \ Wireless Function: 2.4G wireless DMX, Dual band wireless PYRO
- \ Interface: 1*USB, 1*USB Download, 1*LAN, 1*Audio Output, 1*MIDI IN, 1*LTC IN, 1*3-PIN DMX OUT, 1*5-PIN DMX OUT, 1*External Trigger

FXcommander_Editor



FXbutton



FEATURES

- \ Compact size, powerful functions
- \ Support multiple DMX device and effects setting
- \ Timer function to tracking the consumable remains
- \ JOG or timing trigger, and can also work with cycle mode.
- \ Built-in battery design
- \ Aluminum housing
- \ Durable suitcase package
- \ Easy to use

SPECIFICATIONS

- \ Dimension: 165×165×90mm
- \ Weight: 1.5kg
- \ Input: AC100-240V, 50/60Hz
- \ Work Power: 10W
- \ Casing material: Aluminum
- \ Battery Powered: Yes, two 18650 cells, 16h standby
- \ Interface: USB Download, 3-PIN DMX OUT, 5-PIN DMX OUT
- \ Support Device: SPARKULAR®, uFlamer®, CIRCLE FLAMER, SONICBOOM®, Self-define
- \ Package: Suitcase

HOST CONTROLLER



FEATURES

- \ Extremely simple design, easy operation
- \ Exclusive RDMX function, remote monitoring of machine status
- \ Built-in special effects mode
- \ Built-in battery, 5-8h battery life
- \ Support SPARKULAR®, CIRCLE FLAMER and SONICBOOM®

SPECIFICATIONS

- \ Model: ZK6200/ZK6300
- \ Dimension: 390×300×110mm
- \ Weight: 3.5kg
- \ Voltage: AC100-240V, 50/60Hz
- \ Power: 15W
- \ Max. Controllable Machines: 18units (ZK6200)/ 54units (ZK6300)
- \ Support Device: SPARKULAR®, CIRCLE FLAMER, SONICBOOM®

FXmote



FEATURES

- \ OLED screen to show device, effects and battery volume etc. information
- \ 10s automatic screen sleep design to save battery
- \ 5 groups of ID switchable
- \ Separate control of 3 groups of devices simultaneously
- \ 5 preset firing mode, left – right, right – left, middle – ends, ends – middle, synchronize
- \ Compatible with SHOWVEN all wireless device

SPECIFICATIONS

- \ Dimension: 117×65×28mm
- \ Weight: 0.15kg
- \ Battery: 3pcs 23A 12V battery
- \ Power: 0.2W
- \ Work Temp.: -20℃-50℃
- \ Simulated Remote Control Type: YK02 and PROGO



PyroMote



FEATURES

- \ 433M and 868M dual-band wireless, stable wireless signal output
- \ 5-inch high-resolution capacitive screen, clear and easy operation
- \ Support FXcommander®_Editor Software for flexible effects programming
- \ Fast and convenient manual firing
- \ Dual-core processor, smooth operation
- \ Support LTC to realize precise synchronization of effects with music
- \ Built-in synchronous output AUDIO signal, achieves precise synchronization of output music
- \ Support USB back up of files
- \ Support simple DMX operation
- \ 18650 battery powered, easy replacement
- \ Multi languages

SPECIFICATIONS

- \ Dimension: 218×107×40mm
- \ Weight: 0.5kg
- \ Input: 5V 2A
- \ Power: 10W
- \ Casing material: Aluminium
- \ Battery Powered: 2pcs 18650 battery
- \ Charging Time: 3h
- \ Standby Time: 6h
- \ Wireless Function: Dual band wireless PYRO
- \ Interface: USB, 3.5mm Audio Output, LTC IN, DMX OUT
- \ Work Temp.: -20℃-50℃



PyroSlave and PyroAdaptor



\ PyroSlave X4



\ PyroSlave X16



\ PyroSlave X32



\ PyroSlave C16



\ PyroAdaptor

PyroSlave is a serial fireworks igniter specially designed for pyro technicians and stage special effects professionals. To adapt to extreme outdoor applications, PyroSlave features robust aluminum housing, touch keys, and metal connection terminals. PyroSlave can be operated both wired and wireless. Wireless mode with dual-band antennas communicate simultaneously, preventing signal interference on a single frequency band. Compared with wireless DMX, PyroSlave wireless signals have perfect anti-interference performance in large-scale events. The 2-wire PBUS technology used in wired communication can realize power supply while communicating. There are four models of PyroSlave available X4, X16, X32 and C16. C16 is suitcase version with both quick plug and clamp connectors, also equipped with indicator light for each output.

FEATURES

- \ Excellent anti-signal interference performance
- \ Robust aluminum housing and metal connection terminals, waterproof and dustproof as well as prevent the impact of sparks drop from fireworks.(except C16)
- \ Can be operated both wired and wirelessly
- \ Wired mode with 2-wire PBUS technology can realize power supply while communicating, ensure continuous working (except X4)
- \ Wireless mode with dual-band antennas communicate simultaneously, preventing signal interference on a single frequency band.
- \ Wireless mode with 4 wireless channels, 65536 ID. Only when the FXcommander and Slave with the same wireless channel and ID they can communicate. Ensure safe firing.
- \ Firing precision 100 firings/s
- \ Pyro bridge function of PyroSlave ensures versatile communications and avoids signal obstacles behind the big stage
- \ M10 hole convenient for truss installation(except C16)

SPECIFICATIONS:

PyroSlave	PyroSlave X4	PyroSlave X16	PyroSlave X32	PyroSlave C16
DIMENSION (mm)	150×165×85	335×165×85	425×165×85	295×205×91
NET WEIGHT (kg)	1.3	3	4.1	1.7
OUTPUT	4	16	32	16
TRIGGER INDICATE	OLED display and record			
ADDRESS	256 (00 to FF)	256 (00 to FF)	128	256 (00 to FF)
CONTROL	Dual-band wireless	Dual-band wireless, 2-wire PBUS (communication + charging)		
WIRELESS RANGE	600m			
WIRED RANGE	not available	2000m		
FIRING VOLTAGE	24V			12V
FIRING CURRENT	5A			
FIRING DURATION	500ms			
RESISTANCE TEST	Yes			
BATTERY	2 * 18650 cell	4 * 18650 cell (4.2V, 2500mAh), battery not included		
OPERATION TIME	60h, sleep mode 2 weeks; Wired mode: non-stop			
CHARGING TIME	4h	Appr. 6h		
CHARGING CONTROL	Type c	Max. 25 units PyroSlave per PyroAdaptor		
WIRED COMMUNICATION	not available	Max. 64 units PyroSlave per PyroAdaptor		
WATERPROOF LEVEL	IP65			N.A.
MINIMUM FIRING INTERVAL	10ms			

DMX Splitter 8



DMX SPLITTER 8 is a flexible DMX splitter designed to distribute and boost incoming DMX signals into 8 separate outputs. When it use together with SHOWVEN® devices (FXcommander and SHOWVEN® special effects device) it with bi-directional data transfer function. Each input and output interface adopts electrical isolation technology. DMX SPLITTER 8 can effectively buffer, amplify and split standard DMX signal received, input to output, output to output electrical isolation withstand voltage greater than 1000V.

SPECIFICATIONS

- \ Dimension: 530×153×49mm
- \ Weight: 2.8kg
- \ Input: AC100-240V, 50/60Hz
- \ Work Power: 5W
- \ Housing Material: 304 Stainless steel
- \ Interface: Neutrik®PowerCON TRUE1, Neutrik®DMX IN *1, Neutrik®DMX THRU *1, Neutrik®DMX OUT *8

DMX Relay R12

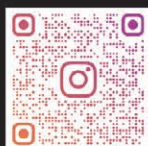


The DMX Relay R12 allows sfx technicians to add DMX control to any switchable device which not include onboard DMX such as CO₂ jet, confetti blasters, voltage controllable flame head etc. It can convert the DMX signal from the master console into a voltage signal for output. DMX Relay R12 maximum support 12units of switchable devices with a maximum output current of 10A of each output interface.

SPECIFICATIONS

- \ Dimension: 485×330×130mm
- \ Weight: 7kg
- \ Housing Material: 304 stainless steel
- \ Input: AC 100-240V, 50/60Hz
- \ Control Voltage Output: AC110 / AC220V
- \ Voltage Output Interface: 12
- \ Max. Output Current: 10A
- \ Max. Output Power: 3800W
- \ Power Input Connector: Neutrik NAC3PX-TOP
- \ Voltage Output Connector: Neutrik NAC3FPX-TOP*12

SHOWVEN®



Showven Technologies Co., Ltd.

 www.showven.cn  info@showven.cn  +86-150-7314-9988

 No.1 Tengda Road, Liuyang ETDZ, Changsha, 410300, Hunan Province, P.R.China.